

I D E A  
**SPECIFICATIONS**

**LET US BE YOUR GUIDE**

Construction Methods

Log Styles

Materials Package

Corner Systems

Interior Finishes

Exterior Finishes

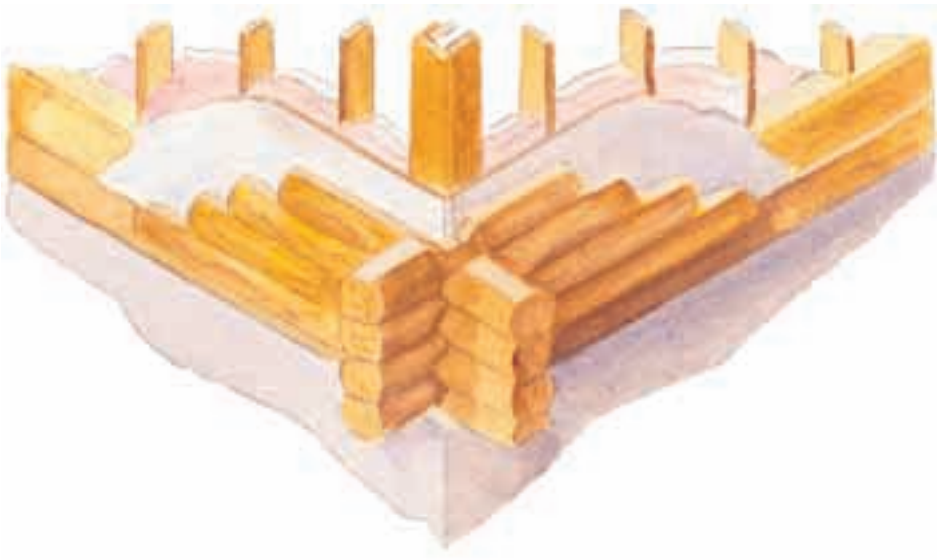
Commercial



**Expedition**  
Log Homes LLC

LOG HOME IDEAS  
FOR YOUR HOME  
AND BUSINESS





## FULL LOG BUILDING METHOD

For some log home enthusiasts, only the authentic solid log building method will do. This traditional log home construction method for first floor walls is combined with the advantages of the insulated log construction method for gable end walls to create a visually appealing, traditional log home. An all weather foam is placed between the logs before they are screwed together to provide a tight and hidden seal. Caulking or chinking is then applied between the logs to aid in weather resistance. Each full log home has saddle-notched overlapping corners (each corner log locking to the next). With each log screwed to the adjoining logs, the walls become one solid unit.

## INSULATED LOG BUILDING METHOD

Combining the best construction methods available with the rustic beauty of logs, the insulated log building method has proven to be a popular choice among log home enthusiasts. Movement and settling is prevented by the conventionally framed walls. Energy efficiency is achieved through the combination of thermal mass and insulation. Ease of construction – particularly plumbing, heating, electrical and cabinetry – makes this a builders' dream. Design flexibility and an abundance of interior finishing choices create a distinctive reflection of each homeowner's individual style.

Unlike the thin "log veneers" that you may have seen, our logs are true half logs cut from harvested timbers, debarked, kiln-dried and hand-crafted with a drawknife. Each log retains its unique characteristics for a truly beautiful finished log home.



## STANDARD MATERIALS PACKAGE

### LOG STYLES

- Kiln-Dried Handcrafted Log
- Air-Dried Swedish Cope Log
- Air-Dried Handcrafted Log
- Kiln-Dried Timber Log
- Kiln-Dried Cabin Log
- Kiln-Dried Old Frontier Log

### CORNER STYLES

- Full Round Butt & Pass
- Traditional Butt & Pass
- Vertical Post Corner
- Handcrafted Saddlenotch
- Swedish Cope Saddlenotch
- Dovetail
- Hand-Scribed Saddlenotch
- Variable Stack Height Full Round Butt & Pass

### EXTERIOR INSULATED LOG WALL SYSTEM

- Skirt log
- Pre-notched, heart center, 90° corners
- Log siding
- Sashco caulk
- Backer rod
- OlyLog screws & spikes
- 2x6 precut studs
- 2x6 sole & double top plates
- Engineered studs for gable end walls
- 2x12 window and door headers
- OSB wall sheathing
- Tyvek housewrap

### EXTERIOR FULL LOG WALL SYSTEM

- Pre-notched, heart center, 90° corners
- Full log wall logs (1st floor)
- Log siding (2nd floor)
- Sashco caulk
- Backer rod & memory foam
- LogHog screws & spikes
- Single top plates (1st floor stud walls)
- 2x6 sole & double top plates (2nd floor)
- 2x6 precut studs (2nd floor stud walls)
- 2x12 window and door headers
- OSB wall sheathing (2nd floor)
- Tyvek housewrap (2nd floor)

### INTERIOR WALL PARTITIONS

- Sole & double top plates
- 2x4 precut studs with
- 2x6 precut studs for plumbing walls
- 2x6 sole & double top plates for plumbing walls
- Interior door headers for bearing walls
- Fireplace framing for zero clearance fireplace

### FIRST FLOOR SYSTEM

- Engineered LVL main beams
- 2x8 Pressure treated sill plate
- Sill seal
- Rimboard at I-Joist floor system
- Joist hangers
- Solid blocking
- T&G AdvanTech floor sheathing
- Sub-floor adhesive
- Conventional stair stringers, treads & risers (log stairs optional)

### SECOND FLOOR SYSTEM

- Rimboard at I-joist floor system
- Joist hangers
- Solid blocking
- T&G AdvanTech floor sheathing
- Sub-floor adhesive
- Log stair stringers, treads and risers
- White cedar posts, rails and spindles

### ROOF SYSTEM

- 5/8" CDX Fir plywood roof sheathing
- Plywood spacing clips
- 2x12 structural roof rafters or roof trusses
- Hurricane clips
- Engineered roof hangers
- 24" box overhang
- 1x10 cedar fascia trim
- Brown soffit vents
- 1x8 T&G knotty pine soffits

### SHINGLE PACKAGE

- 50 year shingles
- 30# building felt
- Ice & water shield for valleys and eaves
- Aluminum valleys and flashing
- Colored aluminum "D" edging
- Continuous ridge and shingle vents
- Starter shingles
- Ridge cap hip shingles

### INSULATION PACKAGE

- R-38 10" high density friction fit roof insulation
- R-21 6" high density friction fit wall insulation
- R-21 high density friction fit box insulation
- 6 Mil vapor retarder



## PINE KILN-DRIED HANDCRAFTED ROUND LOG & CEDAR AIR-DRIED HANDCRAFTED ROUND LOG



Kiln-dried logs ensure stability and eliminate any insects or bacteria that may be in the wood. This premium product is handcrafted with a drawknife and cut from the heart of the log.

## PINE AIR-DRIED HANDCRAFTED SWEDISH COPE LOG



Machine lathed, shaped and finished with a drawknife to combine the precision of Swedish cope siding with the rustic charm of hand-crafted log.

## PINE AIR-DRIED HANDCRAFTED SWEDISH COPE FULL LOG



Machine lathed, shaped and finished with a drawknife to combine the precision of Swedish cope siding with the rustic charm of hand-crafted log.

## PINE KILN-DRIED OLD FRONTIER LOG



Similar to the Timber log, the Old Frontier is rough sawn with machined edges for that rugged look. Suitable for exterior applications, this product features lap groove or T&G, as well as relief cuts on the backside to prevent buckling.

## PINE KILN-DRIED CABIN LOG



Ideal for the budget conscious family, Cabin log offers a smaller profile and a more contemporary look.

## PINE KILN-DRIED TIMBER LOG & CEDAR AIR-DRIED TIMBER LOG



Achieve the rustic look of the pioneer days with this flat log. Rough sawn for exterior application and smooth planed for interior, this beautiful log is a favorite for accenting interior walls and providing a flat surface for decorating. A beveled edge created with a drawknife is provided for caulk or chinking applications.

### KILN DRYING BENEFITS

- Shrinking and twisting of logs is minimized. Logs are pre-shrunk before the final sizing and handcrafting for quality control and to create a uniform stack height.
- Checking (cracking) is minimized by careful drying and re-hydration of the logs. Logs that are experiencing stress beyond acceptable levels are rejected.
- Sanitized logs from kiln drying kills insects, their eggs or larvae, mold and fungi which causes wood decay.
- Pitch is crystallized which prevents the sticky substance from seeping to the surface and staining the wood later on.
- Stain can be applied immediately following construction for more immediate protection, it will absorb deeper and last longer.
- Weight of the logs is greatly reduced making them easier to handle and move.

## Expedition Log Homes LLC

P.O. Box 700080  
Oostburg, Wisconsin 53070  
Toll free 877-250-3300  
Fax: 877-778-3300  
[www.expeditionloghomes.com](http://www.expeditionloghomes.com)



## STANDARD MATERIALS PACKAGE

### CATHEDRAL CEILING (IF APPLICABLE)

Round log cathedral beams  
Round log rafters at cathedral beam location  
1x8 T&G knotty pine ceiling

### DORMER PACKAGE (SHED/GABLE) (IF APPLICABLE)

Log siding  
Sashco caulk  
Backer Rod  
OlyLog screws & spikes  
2x6 precut studs  
2x6 sole & double top plates  
2x12 window and door headers  
OSB wall sheathing  
Tyvek housewrap  
2x12 structural roof rafters  
5/8" CDX Fir plywood roof sheathing  
24" box overhang  
1x10 cedar fascia trim  
Brown soffit vents  
1x8 T&G knotty pine soffits

### DECK PACKAGE (IF APPLICABLE)

Pressure treated joist framing  
Z-Max joist hangers  
2x6 cedar floor decking  
1x10 cedar fascia deck trim  
Round cedar posts and rails  
Lag screws for cedar post connections  
Materials for (2) steps to grade  
Elevated decks include 8' cedar support posts & spindles

### PORCH PACKAGE (IF APPLICABLE)

2" nominal structural roof rafters  
1x8 knotty pine T&G ceilings  
"D" log porch headers  
Round pine support posts with impel rods  
Log screws for post connections  
Round cedar posts & rails  
2x6 cedar decking  
1x10 cedar fascia deck trim  
Pressure treated joist framing  
Z-Max joist hangers  
Materials for (2) steps to grade (Spindles optional)

### GARAGE PACKAGE (IF APPLICABLE)

Log siding  
Sashco caulk  
Backer rod  
OlyLog screws & spikes  
Sill seal  
2x4 pressure treated sole plates  
2x4 stud wall & double top plates  
OSB wall sheathing  
Tyvek housewrap  
2x12 structural roof rafters or trusses  
5/8" CDX fir plywood roof sheathing  
24" box overhang  
1x10 cedar fascia trim  
Brown soffit vents  
1x8 T&G knotty pine soffits

### INTERIOR LOG PACKAGE

(Optional as per log style)

### INTERIOR KNOTTY PINE PACKAGE

(Optional for flat ceilings and interior walls)

### WINDOW PACKAGE

Pella Architect Series Classic casement, awning or double hung Enduraclad  
Argon-filled InsulShield Insulating Glass  
Full screens  
Removable grilles  
Hardware  
Extension jambs

### PATIO DOOR PACKAGE (IF APPLICABLE)

Pella Architect Series Classic Enduraclad  
Argon-filled InsulShield Insulating Glass  
Full screens  
Removable grilles  
Hardware  
Extension jambs

### EXTERIOR DOOR PACKAGE

Pella Carbonite and steel doors

### ITEMS BY OWNER

Exposed basements  
Common nails  
Overhead garage doors  
Interior finishes



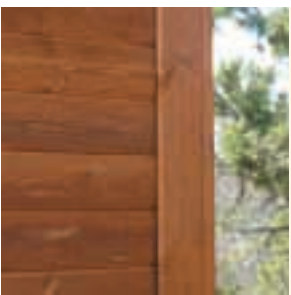
It's the details that set us apart. Your choice of corner style will truly make your home a one-of-a-kind work of art. On the following pages you will see how these unique and interesting corner styles lend an artistic quality to the homes they grace.



### ROUND VERTICAL POST CORNER

Provides a low maintenance corner to dormers or a contemporary finish to the entire home.

*Available for all half-log profiles*



### SQUARE VERTICAL POST CORNER

Offers the same benefits of the round vertical post corner with a decidedly western flair.

*Available for all half-log profiles*







## TRADITIONAL BUTT & PASS CORNER

Recreate the “cabin in the woods” with this rustic butt & pass corner. Log ends continue the “flat-on-flat” profile of the wall sections.

Available in the following log profiles:

- Pine Kiln-Dried Handcrafted Round Half-Log
- Cedar Air-Dried Handcrafted Round Half-Log



## FULL ROUND BUTT & PASS CORNER

Our showcase corner style, the full-round log ends compliment the beauty of the butt & pass corners.

Available in the following log profiles:

- Pine Kiln-Dried Handcrafted Round Half-Log
- Cedar Air-Dried Handcrafted Round Half-Log



## VARIABLE STACK HEIGHT FULL ROUND BUTT & PASS CORNERS

For those who like variety, this creative combination mixes up the stack heights of your logs for a visual treat.

Available in the following log profile:

- Pine Kiln-Dried Handcrafted Round Half-Log







### HANDCRAFTED SADDLENOTCH CORNER

Combines the rustic beauty of handcrafted logs with the intricate character of the saddle notch corner. Each log corner is notched to nestle into the adjoining corner providing a solid row of logs from both angles.

*Available in the following log profiles:*

- Pine Kiln-Dried Handcrafted Round Half-Log
- Cedar Air-Dried Handcrafted Round Half-Log



### SWEDISH COPE SADDLENOTCH CORNER

Admire the precision fit and distinctive beauty of this shaped corner.

*Available in the following log profiles:*

- Air-Dried Swedish Cope Half-Log & Full-Log



### Introducing...

### TIMBER DOVETAIL CORNER

Enjoy the crisp, clean lines of timber with the interesting inter-locking dovetail corner.

*Available in the following log profiles:*

- Pine Kiln-Dried Handcrafted Timber Half-Log
- Cedar Air-Dried Handcrafted Timber Half-Log



### Introducing...

### HAND-SCRIBED SADDLENOTCH CORNER

Experience the beauty of a hand-scribed home with the benefits of the insulated log building method.

*Available in the following log profile:*

- Pine Kiln-Dried Handcrafted Round Half-Log



The flexibility of insulated log construction provides you with a canvas to express yourself through the finishing touches in your log home. Following is a small sampling of the many different ways to complete the interior of our home.



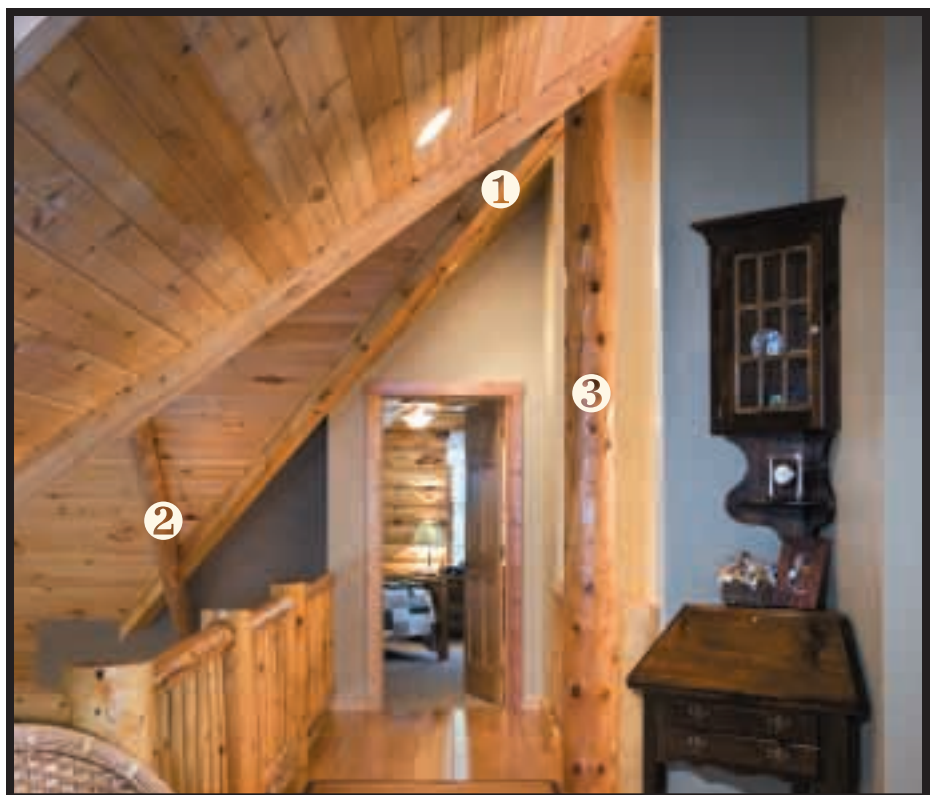
- ❶ Log tie beam
- ❷ Interior round half log
- ❸ Square cut window & door trim
- ❹ Handcrafted log mantel



- ❶ Knotty pine ceiling
- ❷ Log rafters on flat ceiling
- ❸ Round two-sided log window trim



- ❶ Interior timber log
- ❷ Timber four-sided window trim



- ❶ Double cathedral
- ❷ Log rafter
- ❸ Interior vertical post



- ❶ Log tie beam
- ❷ Interior round half log

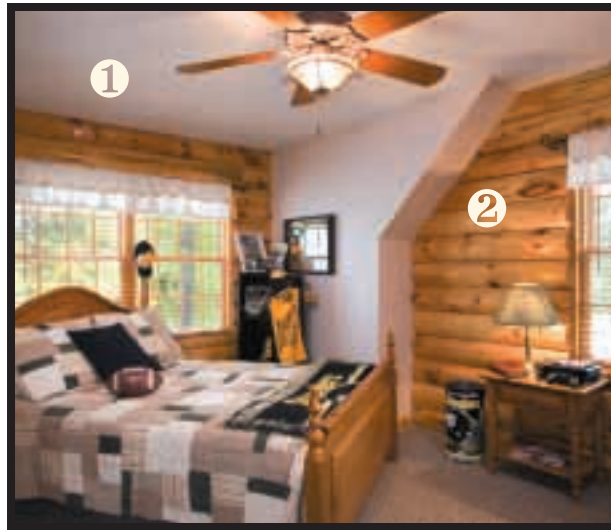


- ❶ Log tie beam with king post & diagonals
- ❷ Standard cedar safety rail





1 Gable dormer with vaulted ceiling  
2 Drywall wedge wall  
3 Knotty pine cathedral ceiling  
4 Interior round half log



1 Drywall ceiling & walls  
2 Interior round half log



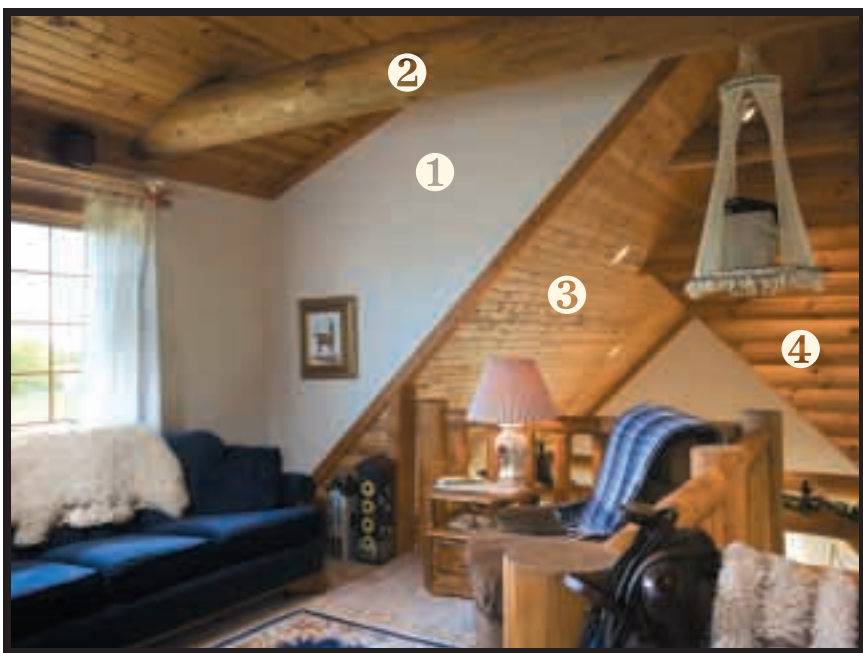
1 Log rafter on flat ceiling  
2 Drywall ceiling  
3 Interior timber log with chinking



Left  
1 Interior round half log  
2 Log tie beam  
3 Round three-sided window trim  
4 Interior Butt & Pass corner



Right  
1 Interior timber log with chinking  
2 Log rafter on flat ceiling  
3 Drywall ceiling



Left  
1 Drywall wedge wall  
2 Log tie beam  
3 Knotty pine cathedral ceiling  
4 Interior round half log



Right  
1 Interior cabin log  
2 Round four-sided window trim



1 Interior round half log  
2 Standard cedar safety rail  
3 Interior timber log with chinking



1 Log rafter on flat ceiling  
2 Knotty pine on flat ceiling  
3 Painted wall  
4 Knotty pine wainscoting



1 Knotty pine cathedral ceiling  
2 Log rafters  
3 Interior round half log





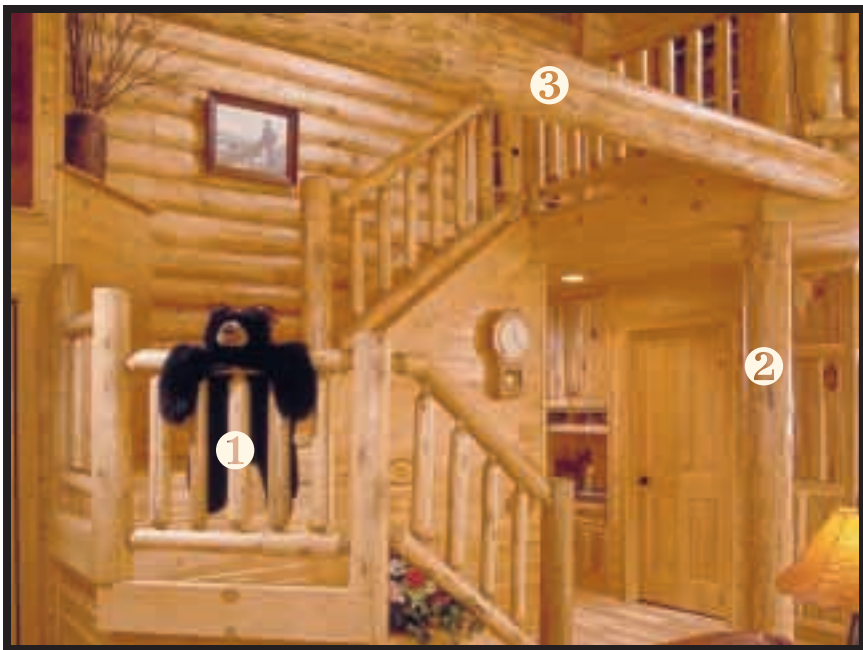
- ❶ Interior round half log
- ❷ Round three-sided window trim
- ❸ Knotty pine cathedral ceiling
- ❹ Gable dormer flat ceiling w/knotty pine
- ❺ Knotty pine wall



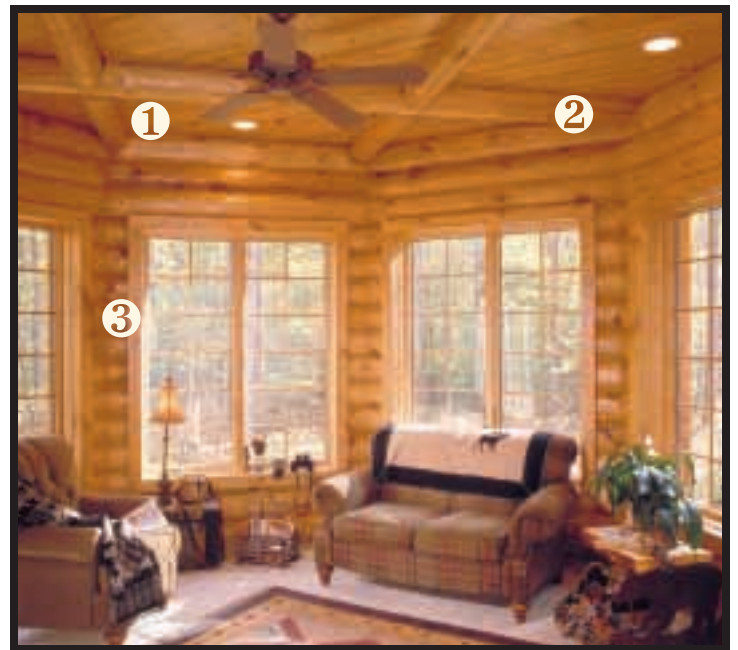
- ❶ Knotty pine wall
- ❷ Drywall cathedral ceiling



- ❶ Drywall walls
- ❷ Knotty pine cathedral ceiling



- Left
- ❶ Pre-assembled rail system
  - ❷ Log support post
  - ❸ Log tie beam



- Right
- ❶ Knotty pine flat ceiling
  - ❷ Log rafters
  - ❸ Square four-sided window trim



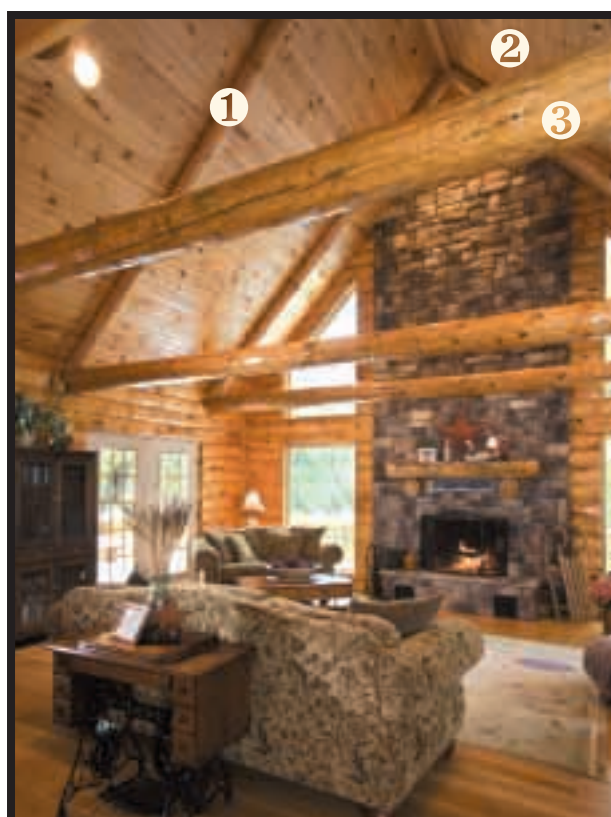
- Left
- ❶ Pine log support post
  - ❷ Square rails & spindles
  - ❸ Knotty pine flat ceiling
  - ❹ Log porch header



- Right
- ❶ Interior Swedish cope log
  - ❷ Log tie beam
  - ❸ Standard window trim (trimless)



- ❶ Loft edge
- ❷ Log support post
- ❸ Decorative "Y" brace



- ❶ Log rafter
- ❷ Knotty pine cathedral ceiling
- ❸ Log tie beam



- ❶ Log tie beam with king post & diagonals
- ❷ Knotty pine cathedral ceiling
- ❸ Interior round half log



**R**oof lines – dormers, porches, balconies, and more. You know what you want, just not sure if you are speaking the same language as your log home professional. Here is a visual guide of common log home architectural details. Use as a common reference point in designing your very own unique log home.



1 Clipped center gable  
2 Log balcony  
3 Elevated deck



1 Gable bumpup  
2 Open gable porch  
3 Log tie beam with king post & diagonals



1 Pine log support post  
2 Shed porch with flat ceiling  
3 Cedar rail



1 Integral porch with vaulted ceiling  
2 Custom character log support post



1 Shed porch with flat ceiling  
2 Boxed eaves  
3 Gable dormer



1 Shed porch with vaulted ceiling  
2 Boxed eaves



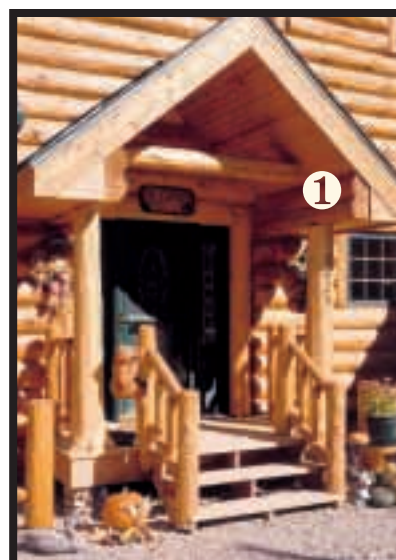
1 Gable dormer  
2 Open gable porch  
3 Boxed eaves  
4 Center section higher than wing roof line



1 Two story home  
2 Decorative eave



1 Shed porch with flat ceiling  
2 Gable dormer combined with open gable porch  
3 Raked eaves



1 Open gable porch



1 Integral porch with vaulted ceiling  
2 Stone piers





① Open gable porch  
② Log tie beam with king post & diagonals  
③ Round log four-sided window trim



① Balcony  
② Gazebo



① Shed screen porch



① Shed porch  
② Sunroom  
③ Blended shed dormer into gable section



① Bumpout  
② Round log four-sided window trim  
③ Boxed eaves



① Gable dormer with step gable roof line  
② Elevated deck



① Ranch with center gable



② Gable bumpout



① Shed dormer  
② Open gable porch



① Gable dormer  
② Center gable section matches wing roof line  
③ Prow



① Bear carved in tree  
② Bumpout  
③ Roof "eye-brow"  
④ Gable dormer  
⑤ Vertical post corner



① Shed dormer to end of house  
② Bumpout  
③ Elevated deck  
④ Balcony



The perfect way to set yourself apart from your competition is by making a statement with your public spaces. The insulated log building method offers flexibility for design and easily meets the different code requirements for commercial structures. Experience increased traffic and sales when you express your image with the uncompromising beauty and integrity of logs.



Relaxing views from the deck



Happy customers = full parking lot



Tall windows &amp; log beams dominate the bar dining area



Log carvings accent the entry



Log trusses framing the diners below



Private dining area



Gift shop



Dining Room



Well-stocked bar features eye-catching log work

## LET US BE YOUR GUIDE



Interested in learning more about how the professionals at Expedition Log Homes can help you?

Call us at 877-250-3300 or visit our website [www.expeditionloghomes.com](http://www.expeditionloghomes.com) for the representative nearest you.

