

# I D E A D E S I G N S



**LET US BE YOUR GUIDE**

At Expedition Log Homes, every home is custom designed and tailor-made to your specifications. The design ideas presented here are meant to spark your imagination. As you study the designs, pick out your favorite elements. Do you see any recurring themes? Are there any particular elements that you're drawn to time and again? We are here to help you combine the floor-plan flow your lifestyle demands with the architectural elements your imagination embraces.



# TABLE OF CONTENTS

Fox Hollow .....Page 2 .....1,039 sq.ft.  
 Elk Rock .....Page 2 .....1,184 sq.ft.  
 Ravenwood .....Page 2 .....1,322 sq.ft.  
 Pine Valley .....Page 3 .....1,784 sq.ft.  
 Shoreline I .....Page 3 .....1,970 sq.ft.  
 Shoreline II .....Page 3 .....1,686 sq.ft.

Rock Valley .....Page 4 .....1,938 sq.ft.  
 Copper Harbor .....Page 4 .....1,969 sq.ft.  
 Arrowhead .....Page 5 .....1,976 sq.ft.  
 Bridgeway .....Page 5 .....2,166 sq.ft.  
 Thunderlake .....Page 6 .....2,199 sq.ft.  
 Wolf River .....Page 6 .....2,311 sq.ft.

Summit I .....Page 7 .....2,602 sq.ft.  
 Summit II .....Page 7 .....2,412 sq.ft.  
 Glacier Gulch .....Page 8 .....2,332 sq.ft.  
 Stone Ridge .....Page 8 .....2,436 sq.ft.  
 Savannah .....Page 9 .....2,536 sq.ft.  
 Driftwood .....Page 9 .....2,604 sq.ft.

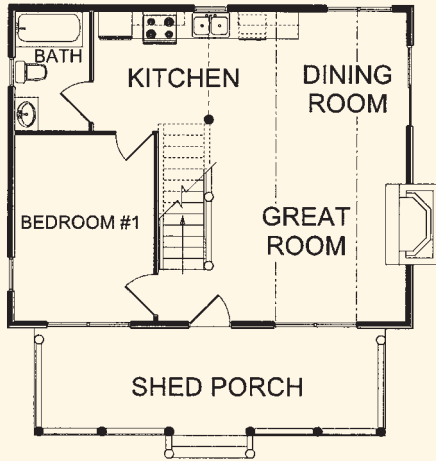
Frisco Peaks .....Page 10 .....2,888 sq.ft.  
 Eagles Nest .....Page 10 .....3,186 sq.ft.  
 Whitetail Cove .....Page 11 .....3,365 sq.ft.  
 Moose River .....Page 11 .....3,371 sq.ft.  
 Nordic Lodge .....Page 12 .....3,384 sq.ft.  
 Sunset Peak .....Page 12 .....3,650 sq.ft.

## FOX HOLLOW

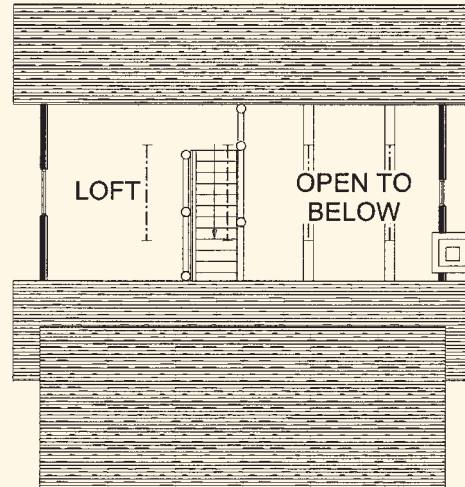
**TOTAL SQ. FT.** - 1,039 sq. ft.  
**FIRST FLOOR** - 720 sq. ft.  
**SECOND FLOOR** - 319sq. ft.  
**GREAT ROOM** - 15'-0" x 12'-0"  
**DINING ROOM** - 12'-0" x 8'-0"  
**KITCHEN** - 9'-0" x 15'-0"  
**BEDROOM 1** - 10'-3" x 14'-0"  
**BATH** - 5'-6" x 9'-0"  
**LOFT** - 24'-0" x 10'-0"



**FIRST FLOOR**



**SECOND FLOOR**



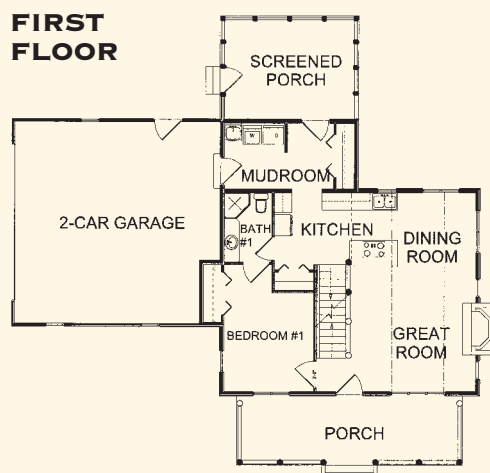
©2003 EXPEDITION LOG HOMES

## ELK ROCK

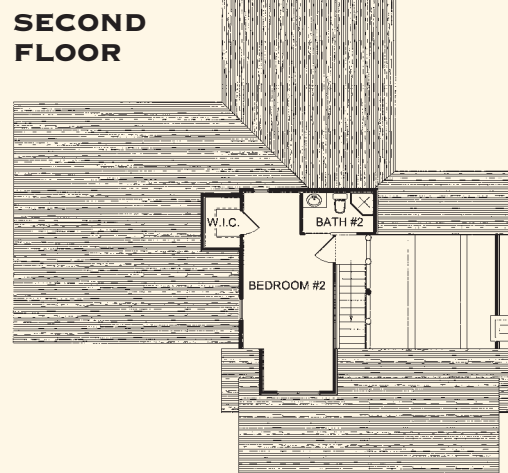
**TOTAL SQ. FT.** - 1,184 sq. ft.  
**FIRST FLOOR** - 865 sq. ft.  
**SECOND FLOOR** - 319 sq. ft.  
**GREAT ROOM** - 14'-6" x 14'-6"  
**DINING ROOM** - 9'-0" x 8'-6"  
**KITCHEN** - 14'-2" x 8'-6"  
**MUD ROOM** - 12'-6" x 7'-6"  
**BEDROOM 1** - 10'-6" x 11'-6"  
**BATH 1** - 5'-6" x 8'-0"  
**BEDROOM 2** - 10'-4" x 18'-0"  
**BATH 2** - 8'-3" x 5'-0"



**FIRST FLOOR**



**SECOND FLOOR**



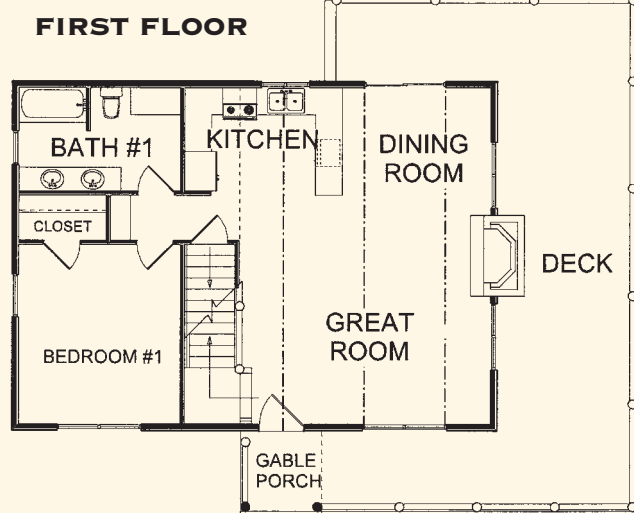
©2003 EXPEDITION LOG HOMES

## RAVENWOOD

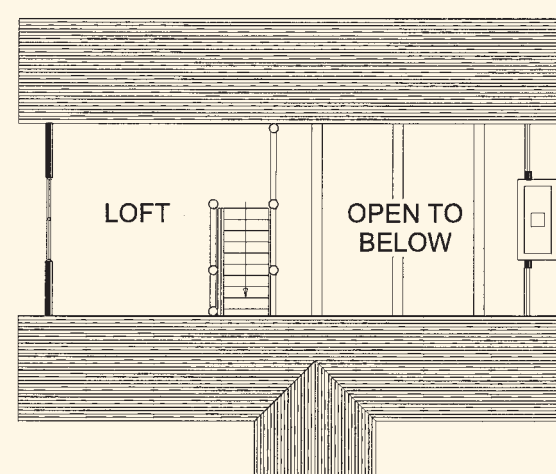
**TOTAL SQ. FT.** - 1,322 sq. ft.  
**FIRST FLOOR** - 936 sq. ft.  
**SECOND FLOOR** - 386 sq. ft.  
**GREAT ROOM** - 18'-9" x 13'-4"  
**DINING ROOM** - 11'-4" x 11'-8"  
**KITCHEN** - 11'-4" x 7'-8"  
**BEDROOM 1** - 12'-0" x 13'-4"  
**BATH/UTILITY** - 12'-0" x 7'-8"  
**LOFT** - 16'-6" x 18'-0"



**FIRST FLOOR**



**SECOND FLOOR**



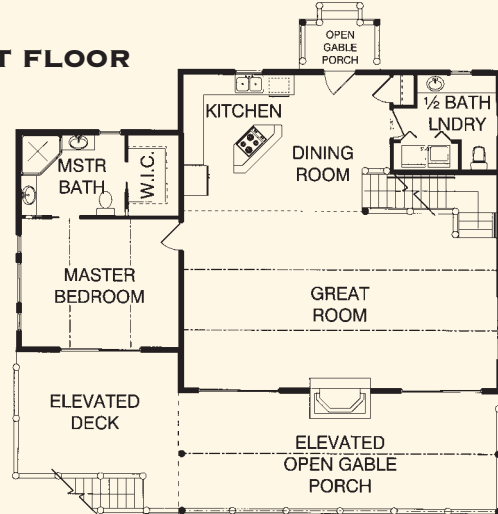
©2003 EXPEDITION LOG HOMES

## PINE VALLEY

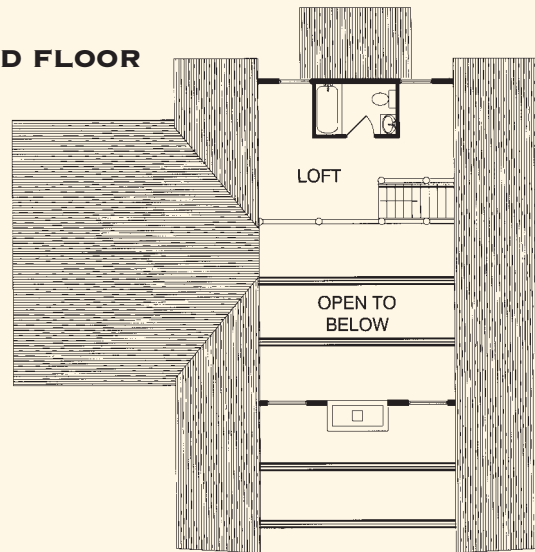
**TOTAL SQ. FT.** - 1,784 sq. ft.  
**FIRST FLOOR** - 1,376 sq. ft.  
**SECOND FLOOR** - 408 sq. ft.  
**GREAT ROOM** - 31'-0" x 17'-6"  
**DINING ROOM** - 9'-6" x 13'-6"  
**KITCHEN** - 11'-0" x 13'-6"  
**UTILITY/1/2 BATH** - 10'-3" x 9'-6"  
**MASTER BEDROOM** - 15'-6" x 12'-9"  
**MASTER BATH** - 10'-3" x 8'-0"  
**LOFT** - 31'-0" x 13'-6"  
**BATH 2** - 8'-0" x 5'-0"



**FIRST FLOOR**



**SECOND FLOOR**

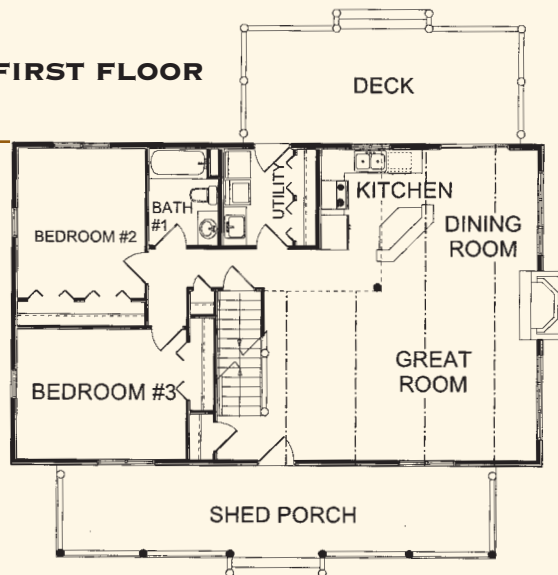


©2006 EXPEDITION LOG HOMES

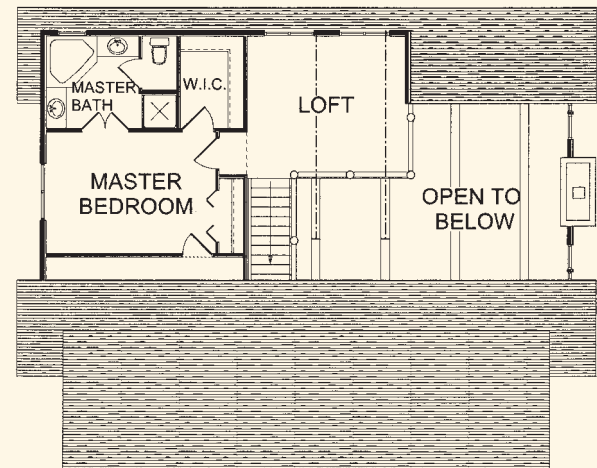
## SHORELINE I

**TOTAL SQ. FT.** - 1,970 sq. ft.  
**FIRST FLOOR** - 1,288 sq. ft.  
**SECOND FLOOR** - 682 sq. ft.  
**GREAT ROOM** - 23'-8" x 14'-8"  
**DINING ROOM** - 10'-0" x 12'-3"  
**KITCHEN** - 8'-9" x 8'-9"  
**UTILITY** - 6'-0" x 8'-6"  
**BATH 1** - 6'-0" x 8'-6"  
**BEDROOM 2** - 11'-0" x 13'-0"  
**BEDROOM 3** - 14'-8" x 11'-3"  
**LOFT** - 13'-8" x 12'-4"  
**MASTER BEDROOM** - 14'-8" x 10'-7"  
**MASTER BATH** - 11'-3" x 8'-0"

**FIRST FLOOR**



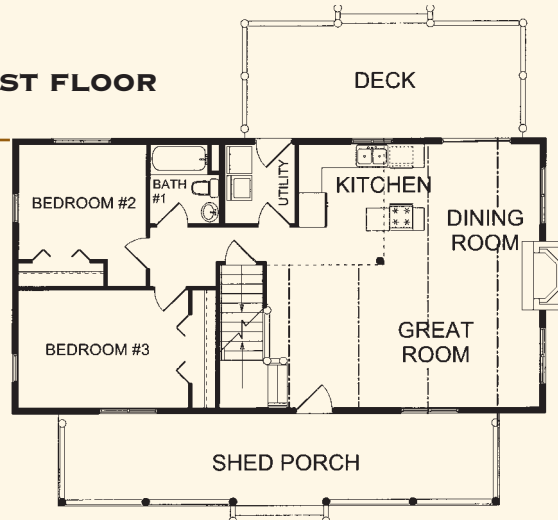
**SECOND FLOOR**



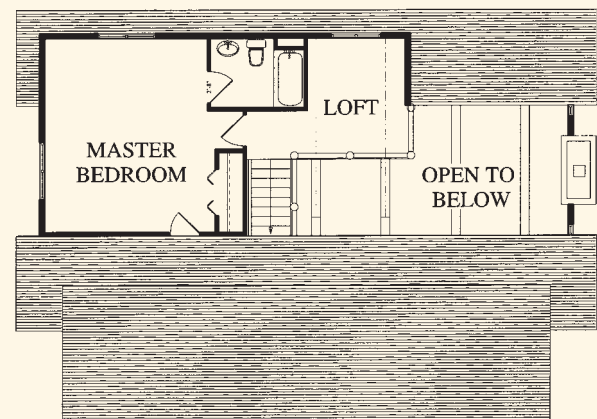
## SHORELINE II

**TOTAL SQ. FT.** - 1,686 sq. ft.  
**FIRST FLOOR** - 1,104 sq. ft.  
**SECOND FLOOR** - 582 sq. ft.  
**GREAT ROOM** - 12'-6" x 17'-9"  
**DINING ROOM** - 10'-6" x 10'-0"  
**KITCHEN** - 7'-6" x 10'-9"  
**UTILITY** - 7'-0" x 6'-0"  
**BATH 2** - 7'-0" x 6'-0"  
**BEDROOM 2** - 10'-0" x 11'-0"  
**BEDROOM 3** - 14'-9" x 10'-6"  
**MASTER BEDROOM** - 14'-9" x 17'-0"  
**MASTER BATH** - 8'-0" x 6'-0"  
**LOFT** - 8'-6" x 10'-6"

**FIRST FLOOR**



**SECOND FLOOR**



### CUSTOM DESIGN TIPS

The example above shows you can take a common log home design (The Shoreline) and reduce the over-all square footage to meet your budget requirements, while maintaining the general flow and character of the home.

In the first example, the width of the home allows for a straight stairway run and abundant closet space. Reducing the size of the home while keeping the important elements does require downsizing storage, adding a turn in the staircase (so that we maintain adequate "head-room"), and reducing the overall size of each room.

As you study the design ideas in this section, notice how the change from a shed porch to a small gable porch or different window styles can affect the outside appearance of the home. Apply the elements that you find visually appealing, with the floorplan design that meets your lifestyle and budget requirements. It's a journey all log home owners take, and we're here to guide you along the way.

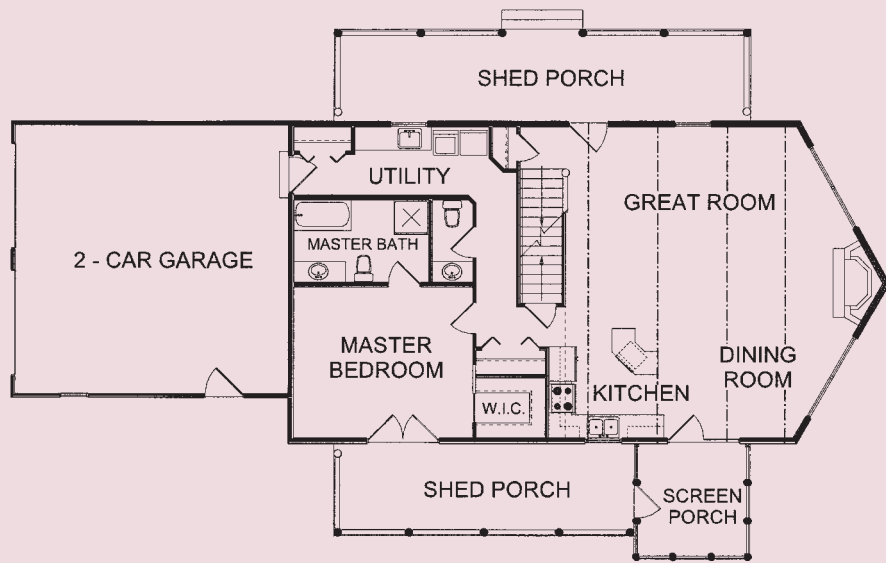
©2003 EXPEDITION LOG HOMES

## ROCK VALLEY

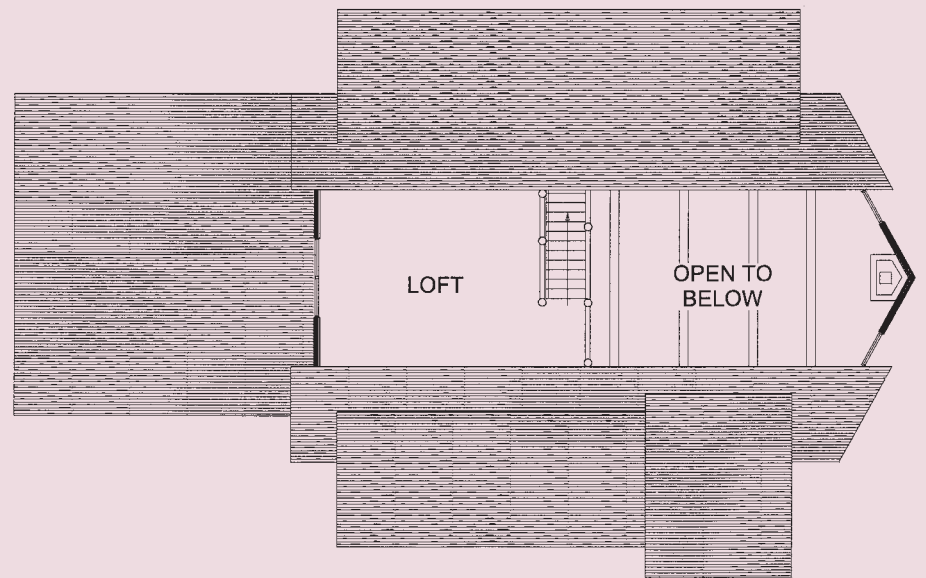
**TOTAL SQ. FT.** - 1,938 sq. ft.  
**FIRST FLOOR** - 1,344 sq. ft.  
**SECOND FLOOR** - 594 sq. ft.  
**GREAT ROOM** - 24'-2" x 15'-6"  
**DINING ROOM** - 15'-6" x 11'-6"  
**KITCHEN** - 10'-0" x 8'-0"  
**UTILITY** - 16'-0" x 6'-0"  
**MASTER BEDROOM** - 15'-6" x 13'-0"  
**MASTER BATH** - 11'-8" x 7'-0"  
**POWDER ROOM** - 3'-6" x 7'-0"  
**LOFT** - 19'-6" x 15'-3"



### FIRST FLOOR



### SECOND FLOOR



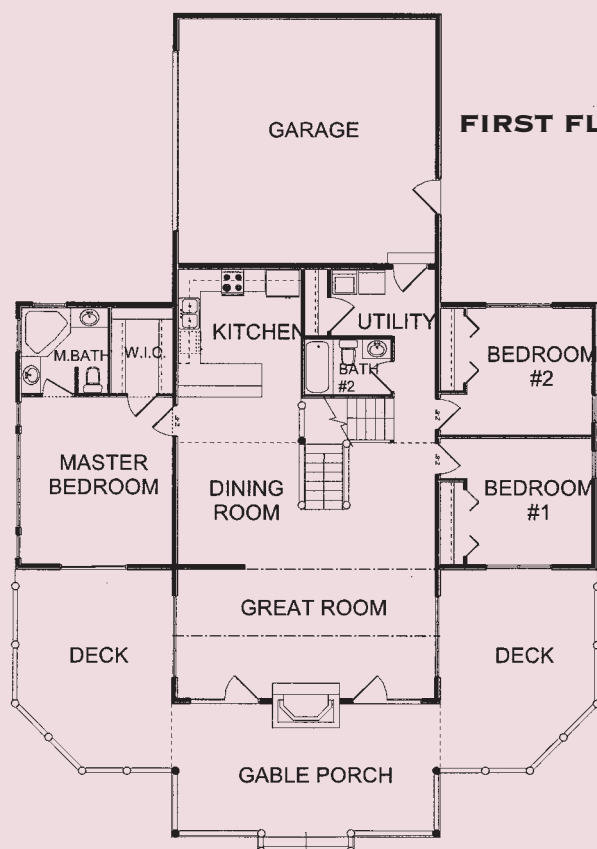
©2003 EXPEDITION LOG HOMES

## COPPER HARBOR

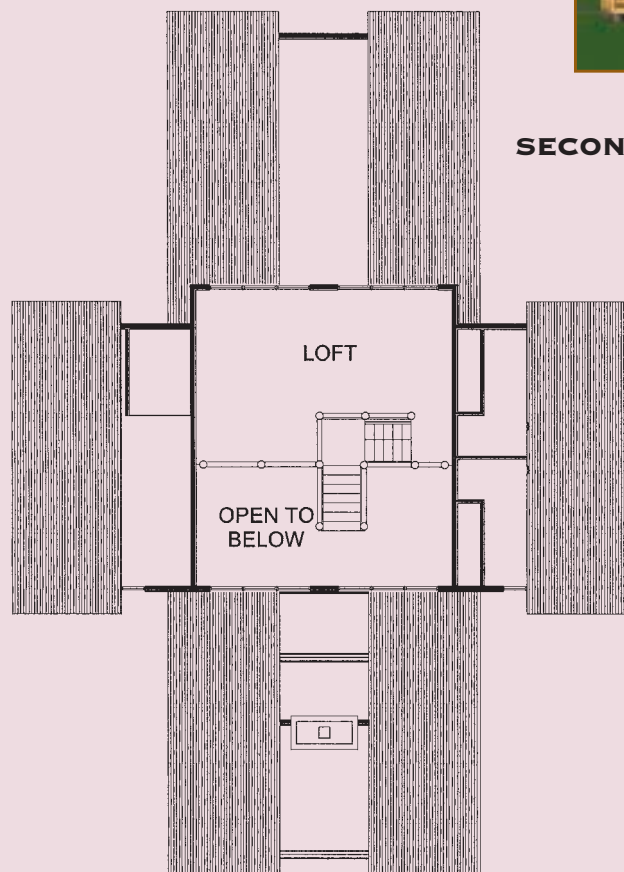
**TOTAL SQ. FT.** - 1,969 sq. ft.  
**FIRST FLOOR** - 1,620 sq. ft.  
**SECOND FLOOR** - 394 sq. ft.  
**GREAT ROOM** - 23'-0" x 11'-6"  
**DINING ROOM** - 11'-6" x 10'-10"  
**KITCHEN** - 11'-0" x 11'-6"  
**MASTER BEDROOM** - 13'-6" x 15'-0"  
**MASTER BATH** - 7'-9" x 7'-9"  
**W.I.C.** - 5'-6" x 7'-9"  
**BATH 2** - 7'-9" x 5'-0"  
**UTILITY** - 9'-4" x 6'-0"  
**BEDROOM 1** - 11'-2" x 11'-4"  
**BEDROOM 2** - 11'-2" x 11'-4"  
**LOFT** - 23'-0" x 15'-7"



### FIRST FLOOR



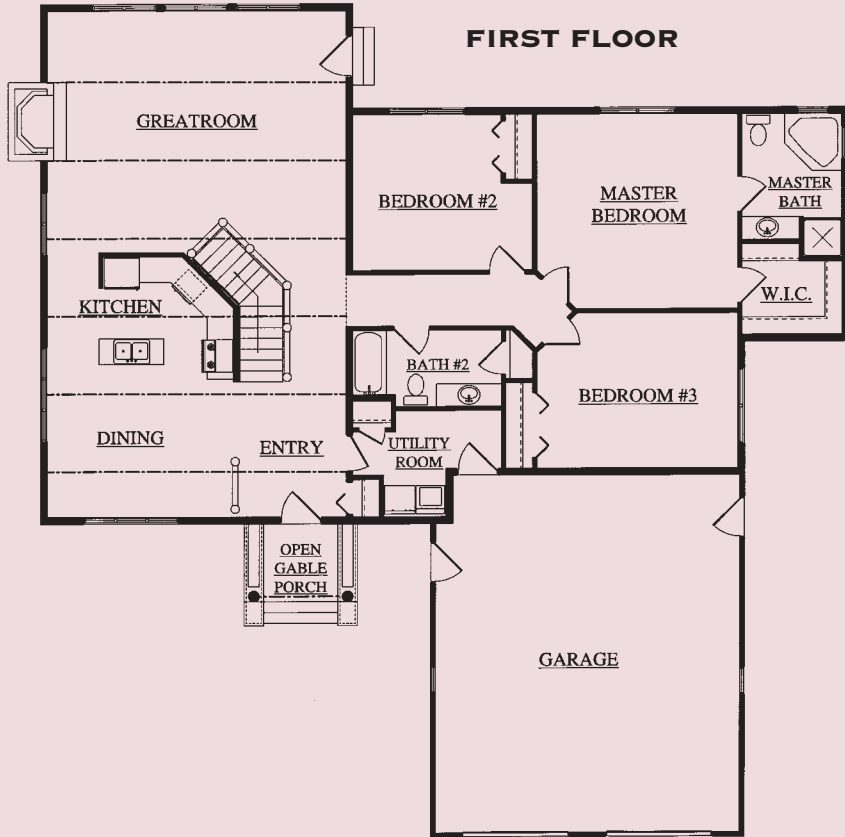
### SECOND FLOOR



©2003 EXPEDITION LOG HOMES

## ARROWHEAD

- TOTAL SQ. FT.** - 1,976 sq. ft.
- FIRST FLOOR** - 1,976 sq. ft.
- GREAT ROOM** - 23'-0" x 18'-6"
- KITCHEN** - 14'-6" x 9'-6"
- DINING ROOM** - 14'-6" x 10'-6"
- ENTRY** - 8'-6" x 10'-6"
- UTILITY** - 11'-6" x 8'-3"
- BATH 2** - 11'-6" x 6'-0"
- MASTER BEDROOM** - 15'-6" x 15'-0"
- MASTER BATH** - 7'-9" x 9'-9"
- W.I.C.** - 7'-9" x 7'-0"
- BEDROOM 2** - 11'-6" x 12'-0"
- BEDROOM 3** - 15'-6" x 12'-0"



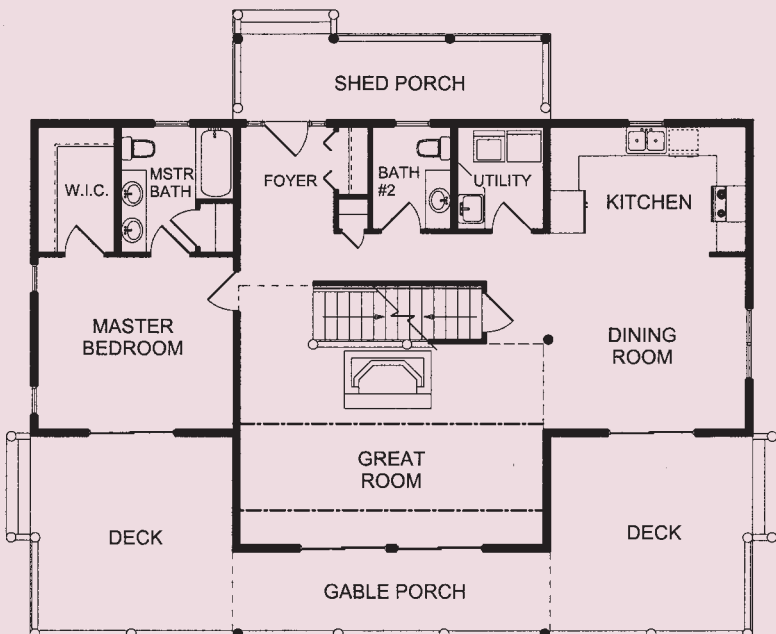
©2006 EXPEDITION LOG HOMES

## BRIDGEWAY

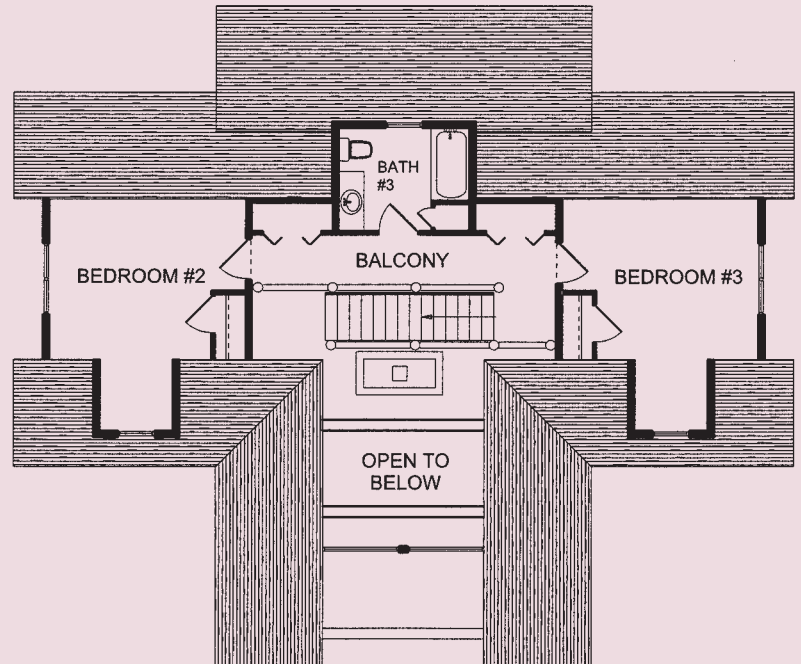
- TOTAL SQ. FT.** - 2,166 sq. ft.
- FIRST FLOOR** - 1,276 sq. ft.
- SECOND FLOOR** - 890 sq. ft.
- GREAT ROOM** - 21'-0" x 14'-0"
- DINING ROOM** - 14'-0" x 12'-0"
- KITCHEN** - 13'-6" x 9'-0"
- UTILITY** - 6'-0" x 7'-0"
- BATH 2** - 5'-6" x 7'-0"
- FOYER** - 6'-6" x 7'-0"
- MASTER BEDROOM** - 13'-6" x 12'-0"
- MASTER BATH** - 7'-9" x 9'-0"
- W.I.C.** - 5'-3" x 9'-0"
- BEDROOM 2** - 13'-6" x 11'-0"
- BEDROOM 3** - 13'-6" x 11'-0"
- BATH 3** - 9'-0" x 7'-0"



### FIRST FLOOR



### SECOND FLOOR



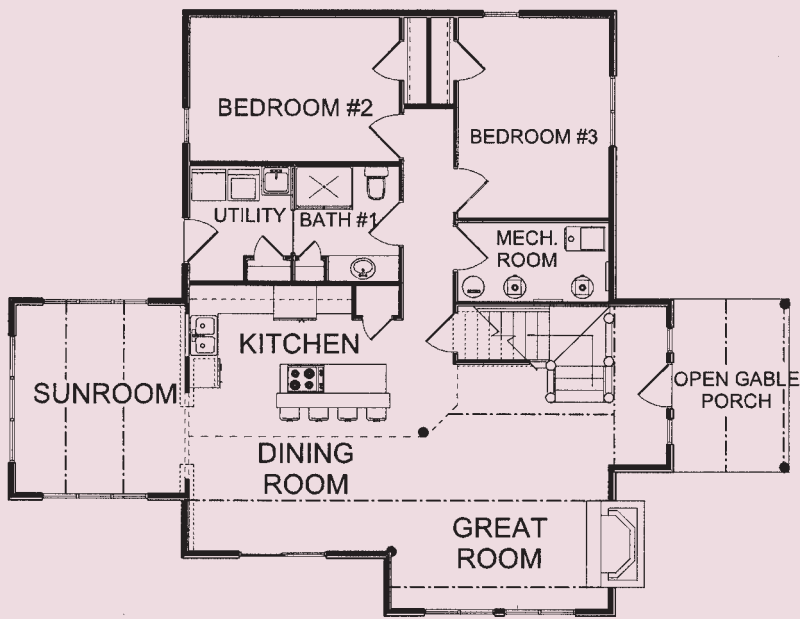
©2003 EXPEDITION LOG HOMES

## THUNDERLAKE

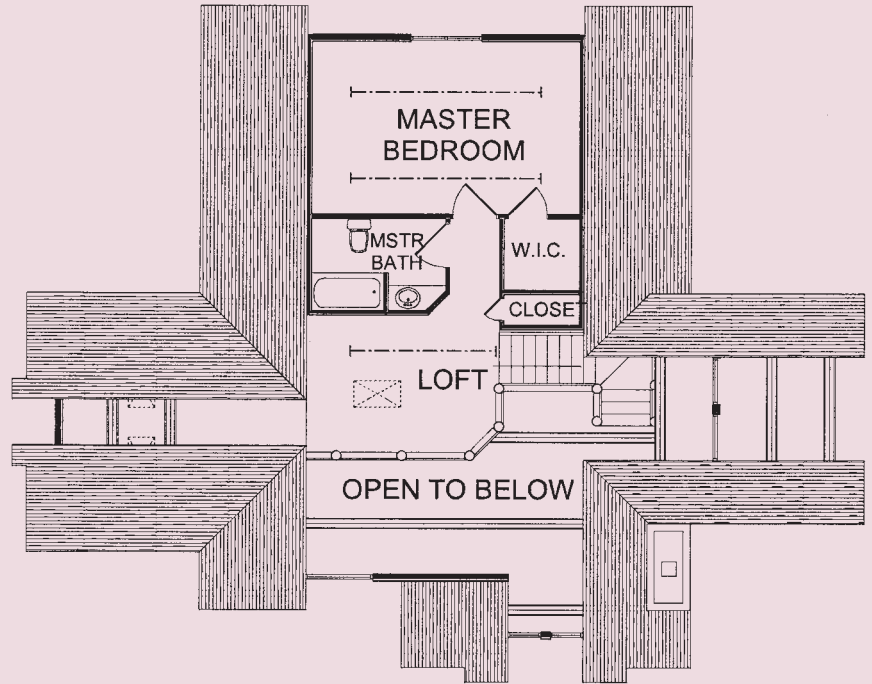
**TOTAL SQ. FT.** - 2,199 sq. ft.  
**FIRST FLOOR** - 1,420 sq. ft.  
**SECOND FLOOR** - 779 sq. ft.  
**GREAT ROOM** - 16'-0" x 17'-0"  
**KITCHEN/DINING ROOM** - 14'-0" x 19'-0"  
**SUNROOM** - 12'-0" x 14'-0"  
**MECHANICAL ROOM** - 6'-0" x 11'-0"  
**UTILITY/BATH 1** - 8'-0" x 15'-0"  
**BEDROOM 2** - 10'-0" x 15'-0"  
**BEDROOM 3** - 11'-0" x 14'-0"  
**MASTER BEDROOM** - 12'-0" x 19'-0"  
**MASTER BATH** - 9'-6" x 6'-6"  
**W.I.C.** - 5'-0" x 5'-0"  
**LOFT** - 14'-0" x 10'-0"



### FIRST FLOOR



### SECOND FLOOR



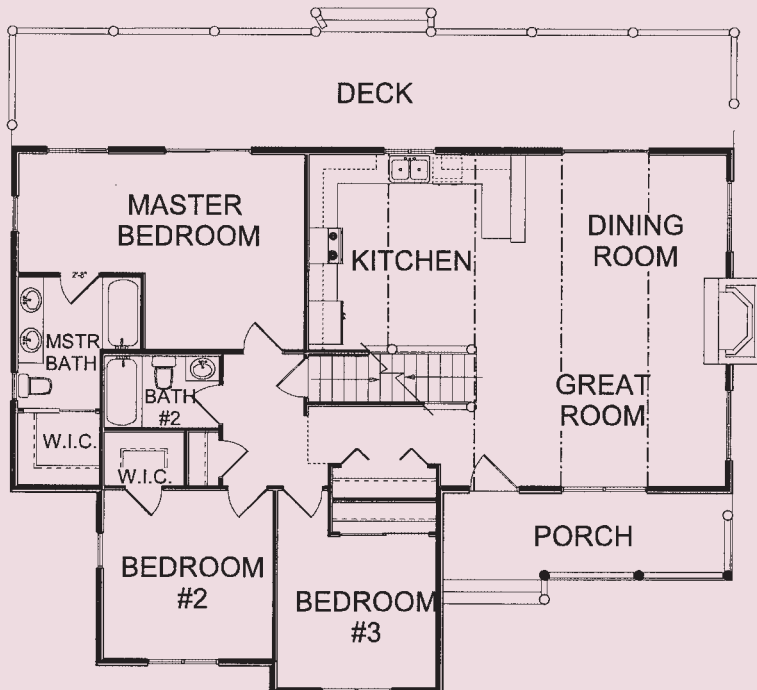
©2003 EXPEDITION LOG HOMES

## WOLF RIVER

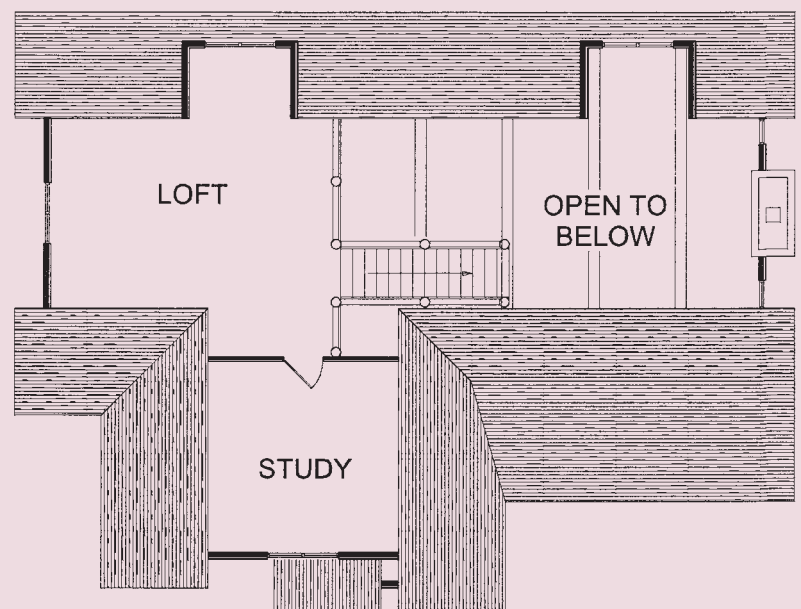
**TOTAL SQ. FT.** - 2,311 sq. ft.  
**FIRST FLOOR** - 1,512 sq. ft.  
**SECOND FLOOR** - 799 sq. ft.  
**GREAT ROOM** - 27'-0" x 12'-0"  
**DINING ROOM** - 14'-0" x 12'-0"  
**KITCHEN** - 14'-0" x 15'-0"  
**MASTER BEDROOM** - 11'-0" x 13'-6"  
**MASTER BATH** - 8'-6" x 8'-0"  
**BATH 2** - 8'-0" x 5'-0"  
**BEDROOM 2** - 11'-8" x 11'-8"  
**BEDROOM 3** - 11'-0" x 10'-6"  
**LOFT** - 15'-0" x 20'-0"  
**STUDY** - 13'-6" x 15'-0"



### FIRST FLOOR



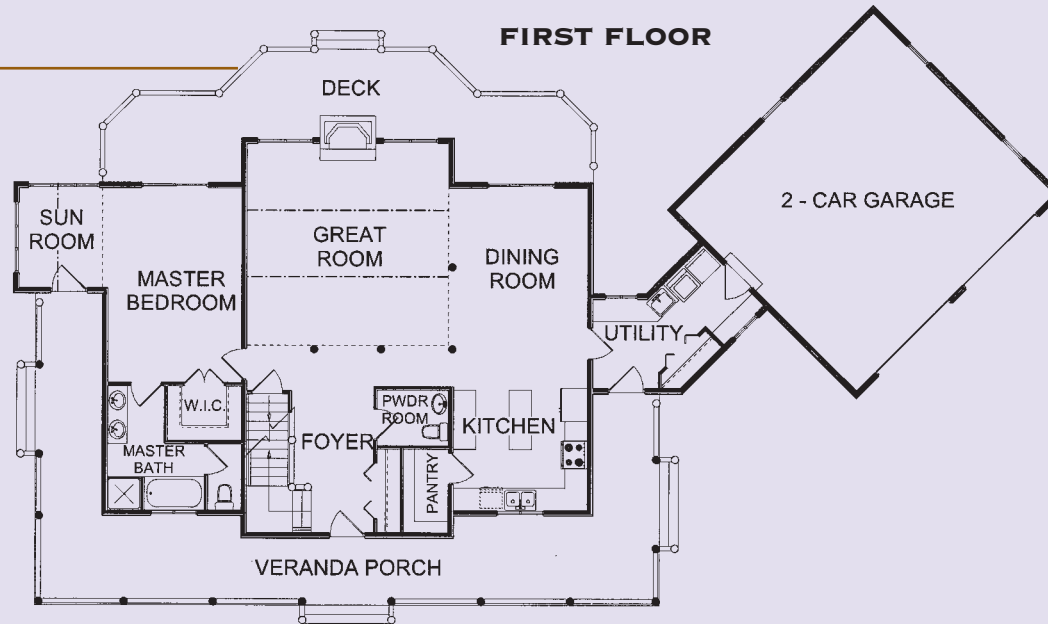
### SECOND FLOOR



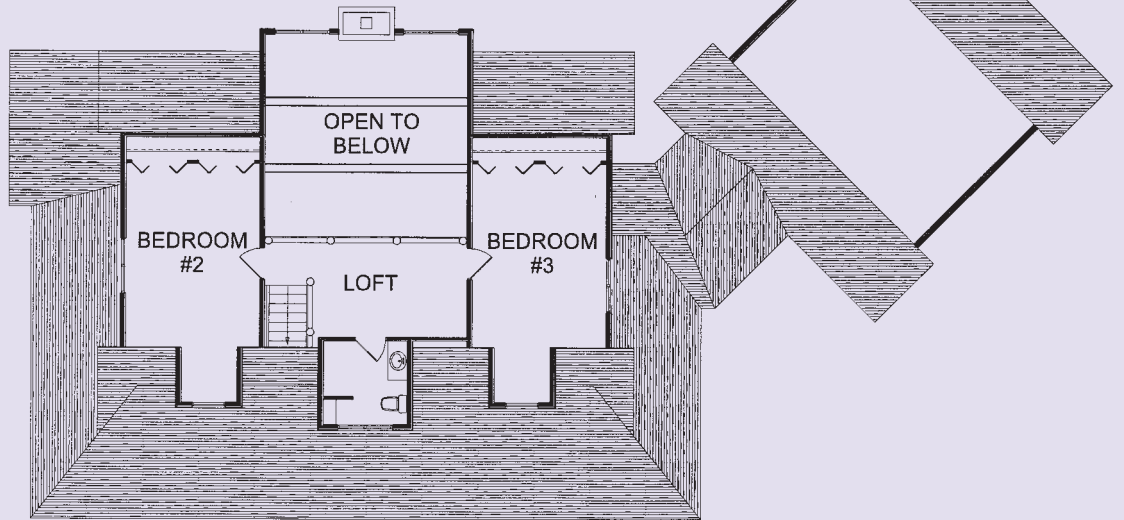
©2003 EXPEDITION LOG HOMES

## SUMMIT I

**TOTAL SQ. FT.** - 2,602 sq. ft.  
**FIRST FLOOR** - 1,596 sq. ft.  
**SECOND FLOOR** - 1,006 sq. ft.  
**GREAT ROOM** - 19'-1" x 18'-2"  
**DINING ROOM** - 12'-5" x 18'-0"  
**KITCHEN** - 12'-5" x 11'-0"  
**PANTRY** - 4'-0" x 7'-5"  
**POWDER ROOM** - 6'-4" x 5'-4"  
**FOYER** - 7'-4" x 13'-0"  
**MASTER BEDROOM** - 12'-6" x 17'-6"  
**MASTER BATH** - 6'-0" x 12'-0" +  
 5'-0" x 5'-0"  
**W.I.C.** - 7'-0" x 4'-11"  
**UTILITY** - 8'-0" x 9'-0" +  
 9'-0" x 9'-0"  
**BEDROOM 2** - 12'-0" x 21'-5"  
**BEDROOM 3** - 12'-0" x 21'-5"  
**BATH** - 8'-6" x 7'-6"  
**LOFT** - 18'-1" x 9'-0"

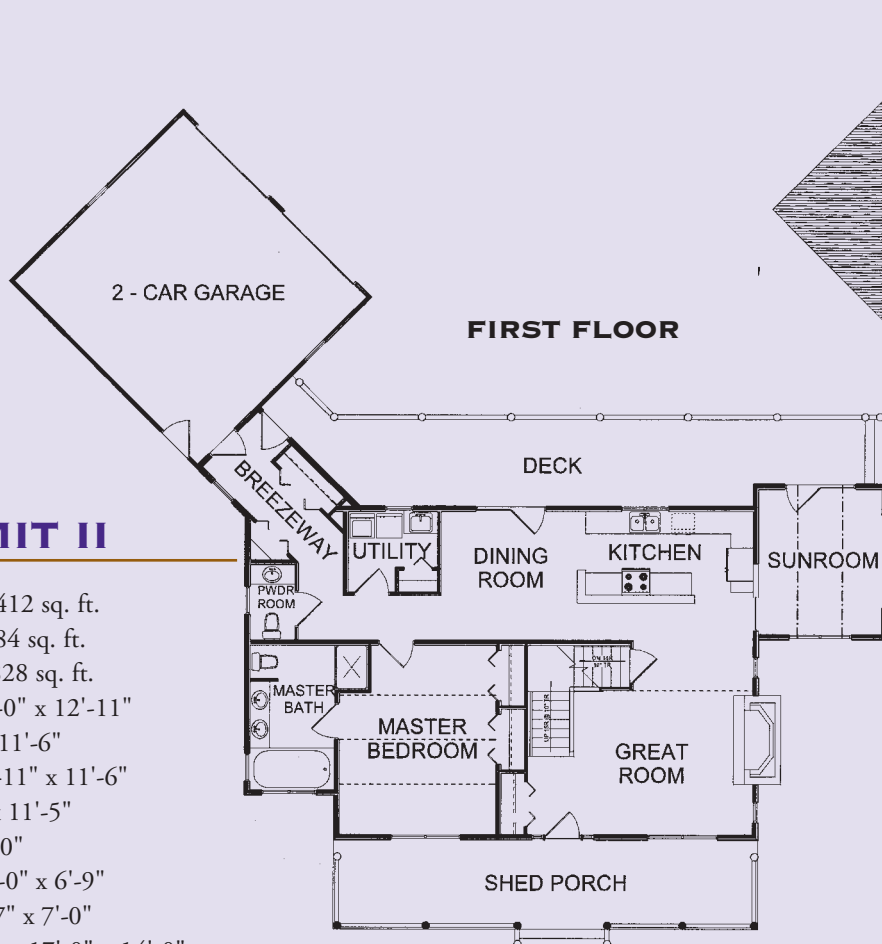


**SECOND FLOOR**

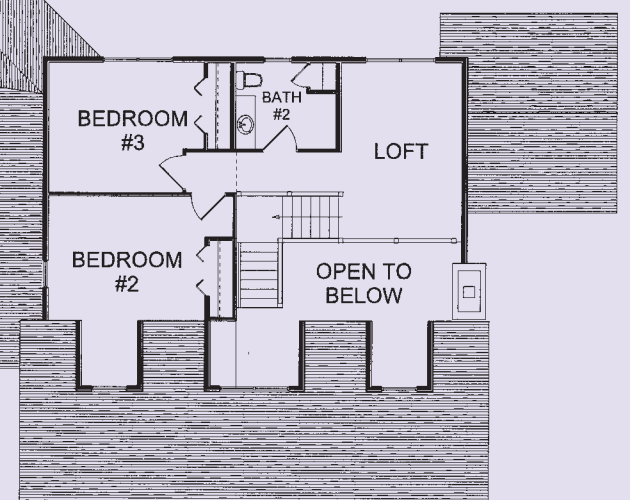


## SUMMIT II

**TOTAL SQ. FT.** - 2,412 sq. ft.  
**FIRST FLOOR** - 1,584 sq. ft.  
**SECOND FLOOR** - 828 sq. ft.  
**GREAT ROOM** - 16'-0" x 12'-11"  
**KITCHEN** - 15'-0" x 11'-6"  
**DINING ROOM** - 12'-11" x 11'-6"  
**SUNROOM** - 14'-0" x 11'-5"  
**UTILITY** - 7'-3" x 8'-0"  
**POWDER ROOM** - 4'-0" x 6'-9"  
**BREEZEWAY** - 12'-7" x 7'-0"  
**MASTER BEDROOM** - 17'-0" x 14'-0"  
**MASTER BATH** - 7'-6" x 13'-0"  
**BEDROOM 2** - 14'-0" x 17'-0"  
**BEDROOM 3** - 13'-11" x 11'-8"  
**BATH 2** - 7'-9" x 8'-11"  
**LOFT** - 10'-9" x 16'-1"



**SECOND FLOOR**



### CUSTOM DESIGN TIPS

The Summit example maintains the general look of the outside (*front porch and dormers, offset attached garage*) while drastically altering the interior flow. Keep in mind that each design choice you make will affect budget, aesthetics, comfort and workability.

This example illustrates several different design choices. For budget purposes, size reduction is accomplished by eliminating the center gable in the great room/foyer area. Cost is also reduced by deleting corners on the home.

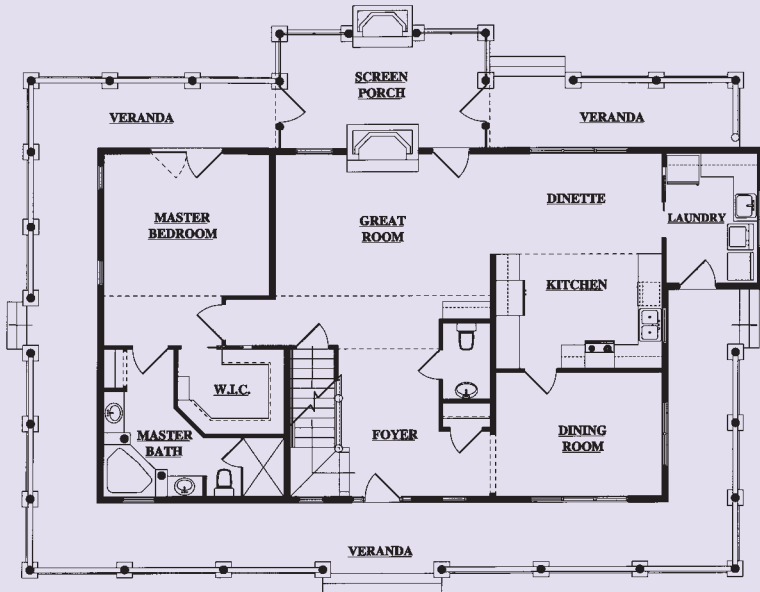
The floor-plan design you choose will compliment your lifestyle and property. This example shows you two entirely different plans that can be accommodated in the same architectural style. As you review the plans in this Design Ideas guide, reflect on which elements you will combine to create your very own Expedition log home.

## GLACIER GULCH

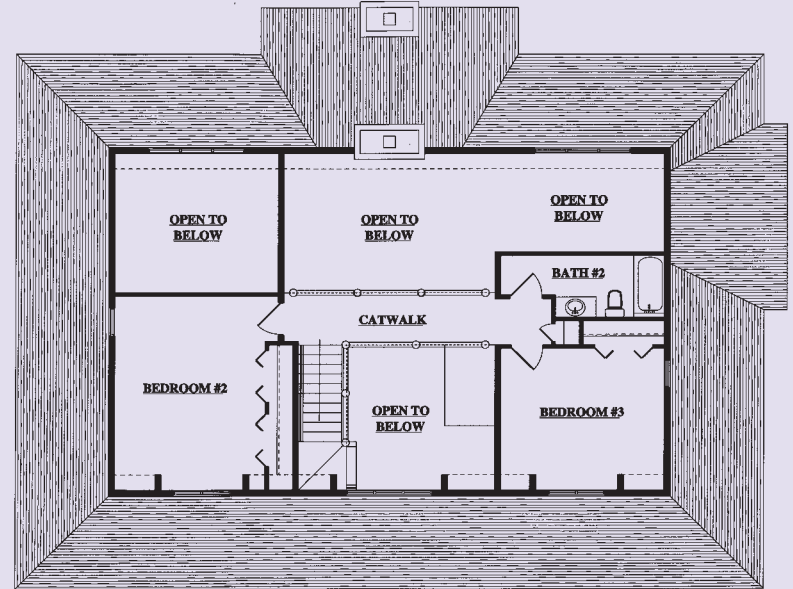
**TOTAL SQ. FT.** - 2,332 sq. ft.  
**FIRST FLOOR** - 1,440 sq. ft.  
**SECOND FLOOR** - 892 sq. ft.  
**GREAT ROOM** - 18'-0" x 12'-0"  
**KITCHEN** - 14'-0" x 10'-3"  
**DINING ROOM** - 14'-0" x 10'-6"  
**DINETTE** - 14'-0" x 8'-6"  
**FOYER** - 8'-6" x 12'-6"  
**LAUNDRY** - 7'-9" x 11'-0"  
**POWDER ROOM** - 4'-0" x 6'-6"  
**MASTER BEDROOM** - 14'-0" x 12'-0"  
**MASTER BATH** - 11'-8" x 12'-6"  
**W.I.C.** - 9'-0" x 7'-3"  
**BATH 2** - 14'-0" x 5'-4"  
**BEDROOM 2** - 13'-0" x 16'-9"  
**BEDROOM 3** - 14'-0" x 12'-3"



### FIRST FLOOR



### SECOND FLOOR



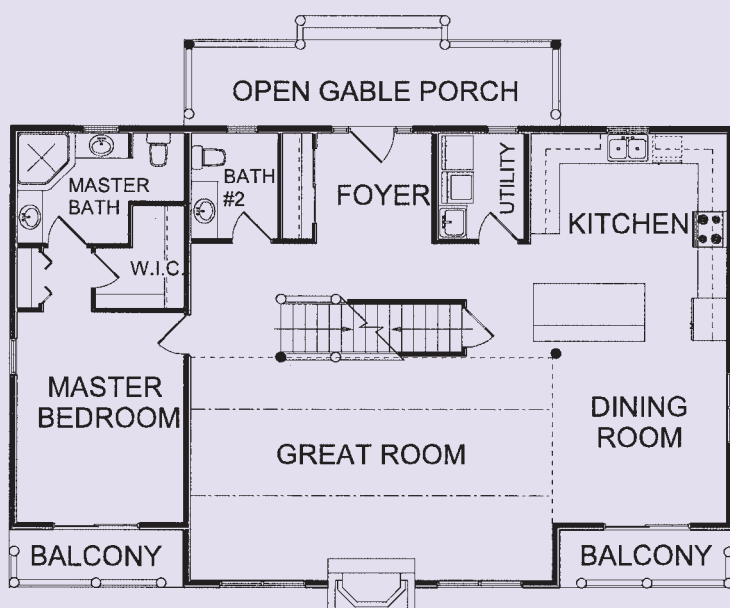
©2006 EXPEDITION LOG HOMES

## STONE RIDGE

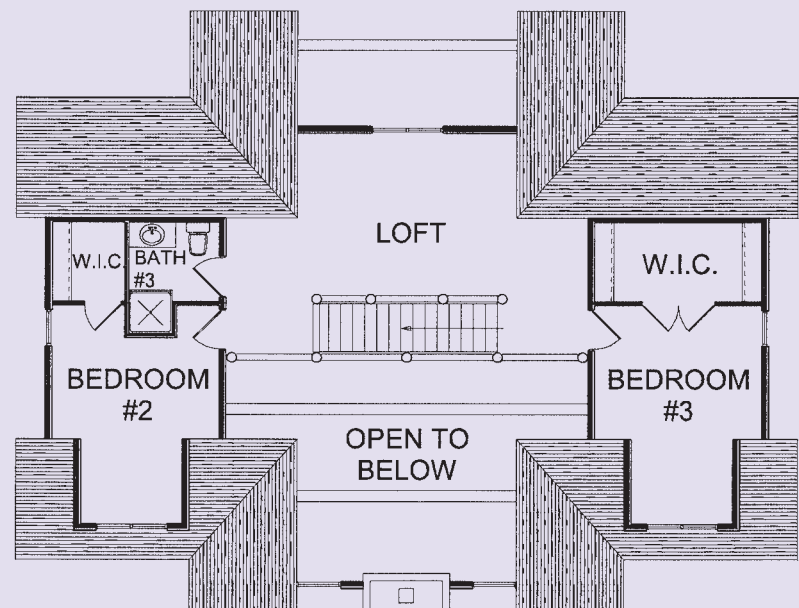
**TOTAL SQ. FT.** - 2,546 sq. ft.  
**FIRST FLOOR** - 1,504 sq. ft.  
**SECOND FLOOR** - 1,042 sq. ft.  
**GREAT ROOM** - 25'-0" x 15'-6"  
**DINING ROOM** - 12'-0" x 12'-6"  
**KITCHEN** - 11'-6" x 14'-6"  
**UTILITY** - 8'-0" x 7'-6"  
**FOYER** - 8'-0" x 7'-6"  
**BATH 2** - 6'-0" x 7'-6"  
**MASTER BEDROOM** - 11'-6" x 14'-6"  
**MASTER BATH** - 11'-6" x 7'-8"  
**LOFT** - 25'-0" x 11'-9"  
**BEDROOM 2** - 11'-6" x 15'-0"  
**BEDROOM 3** - 11'-6" x 15'-0"  
**BATH 3** - 7'-3" x 5'-6"



### FIRST FLOOR



### SECOND FLOOR



©2003 EXPEDITION LOG HOMES

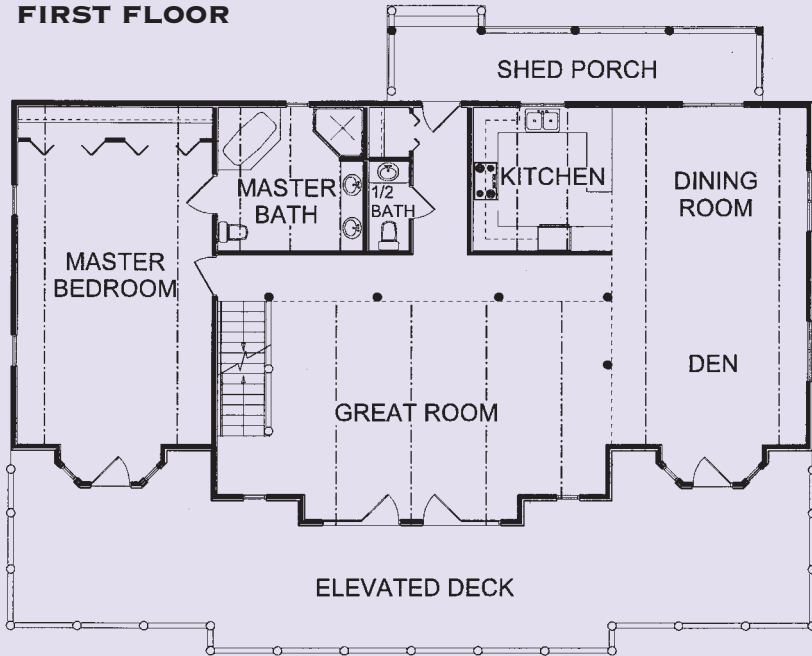


## SAVANNAH

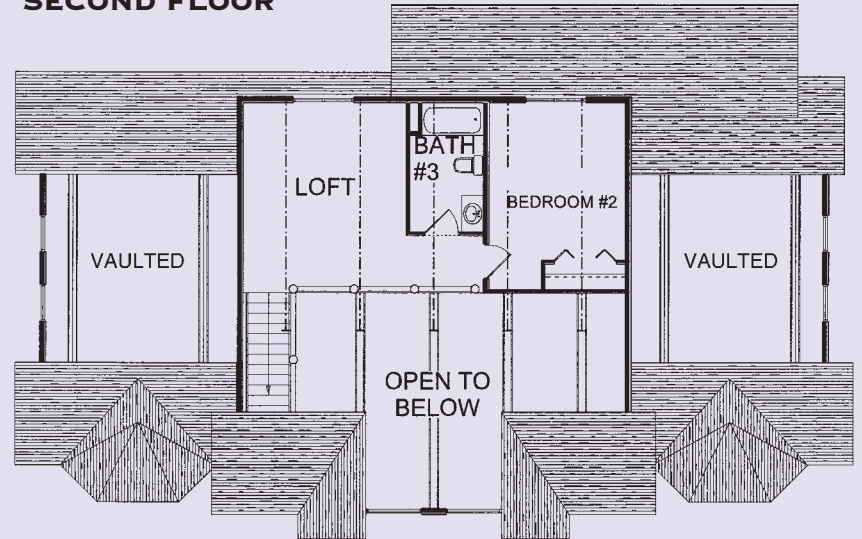
**TOTAL SQ. FT.** - 2,536 sq. ft.  
**FIRST FLOOR** - 2,024 sq. ft.  
**SECOND FLOOR** - 512 sq. ft.  
**GREAT ROOM** - 28'-0" x 17'-0"  
**DINING ROOM** - 16'-0" x 14'-0"  
**KITCHEN** - 12'-0" x 12'-0"  
**DEN** - 16'-0" x 14'-0"  
**MASTER BEDROOM** - 16'-0" x 28'-0"  
**MASTER BATH** - 12'-0" x 12'-0"  
**HALF BATH** - 4'-0" x 8'-0"  
**BEDROOM 2** - 12'-0" x 16'-0"  
**BATH 3** - 7'-0" x 11'-0"  
**LOFT** - 14'-0" x 16'-0"



**FIRST FLOOR**



**SECOND FLOOR**



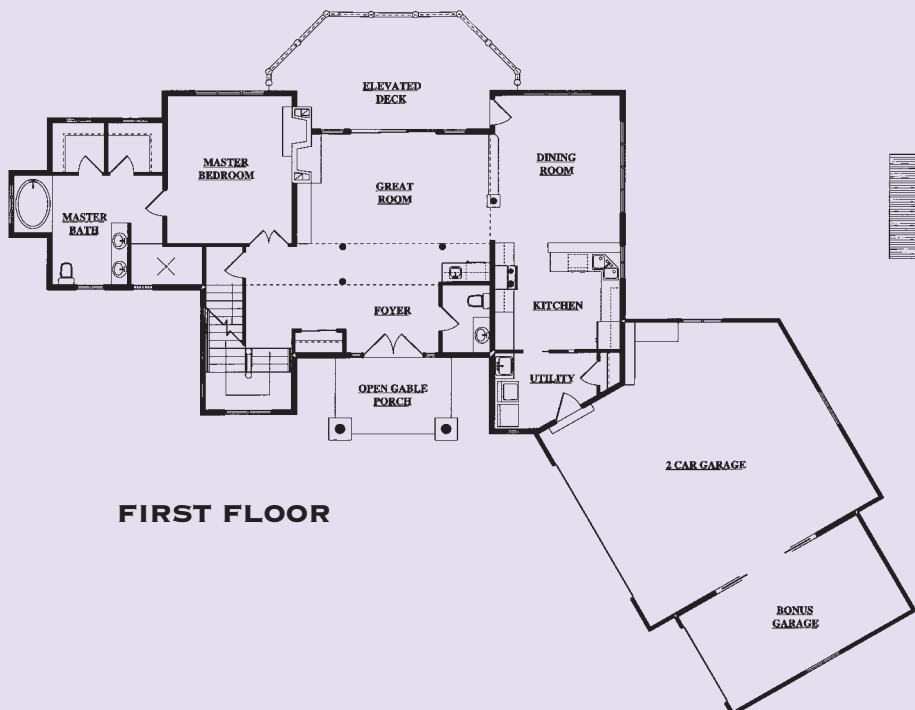
©2003 EXPEDITION LOG HOMES

## DRIFTWOOD

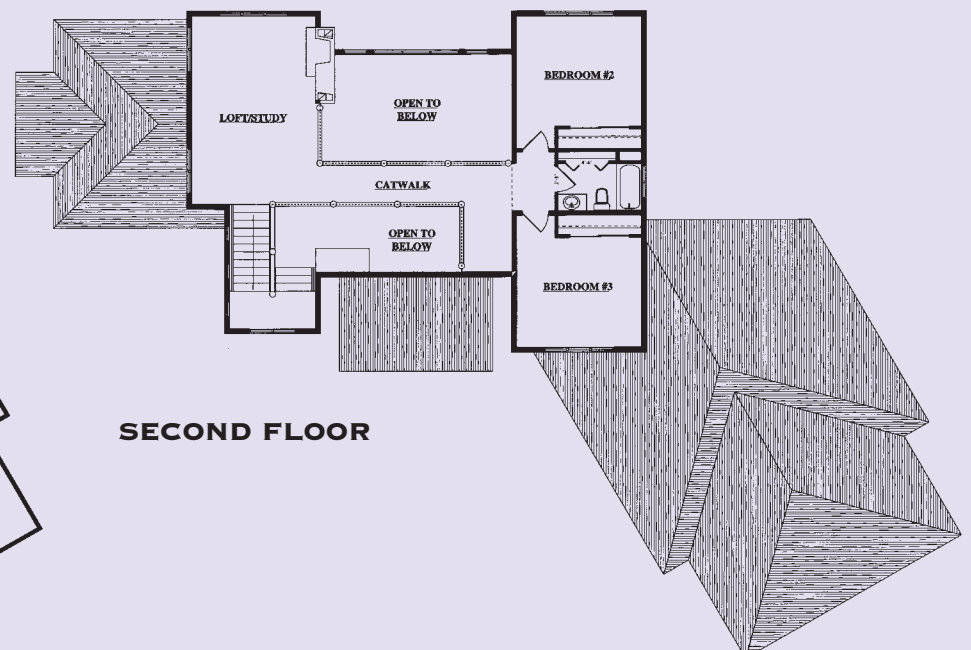
**TOTAL SQ. FT.** - 2,604 sq. ft.  
**FIRST FLOOR** - 1,675 sq. ft.  
**SECOND FLOOR** - 929 sq. ft.  
**GREAT ROOM** - 20'-0" x 11'-6"  
**KITCHEN** - 13'-0" x 11'-3"  
**DINING ROOM** - 13'-0" x 15'-6"  
**UTILITY** - 10'-6" x 8'-0"  
**FOYER** - 9'-9" x 7'-3"  
**POWDER ROOM** - 5'-0" x 7'-2"  
**MASTER BEDROOM** - 13'-0" x 15'-6"  
**MASTER BATH** - 11'-6" x 11'-6"  
**W.I.C. 1** - 5'-6" x 5'-3"  
**W.I.C. 2** - 5'-9" x 5'-3"  
**BEDROOM 2** - 13'-0" x 11'-6"  
**BEDROOM 3** - 13'-0" x 11'-6"  
**BATH 2** - 8'-9" x 5'-0"  
**LOFT/STUDY** - 13'-0" x 20'-0"



**FIRST FLOOR**



**SECOND FLOOR**



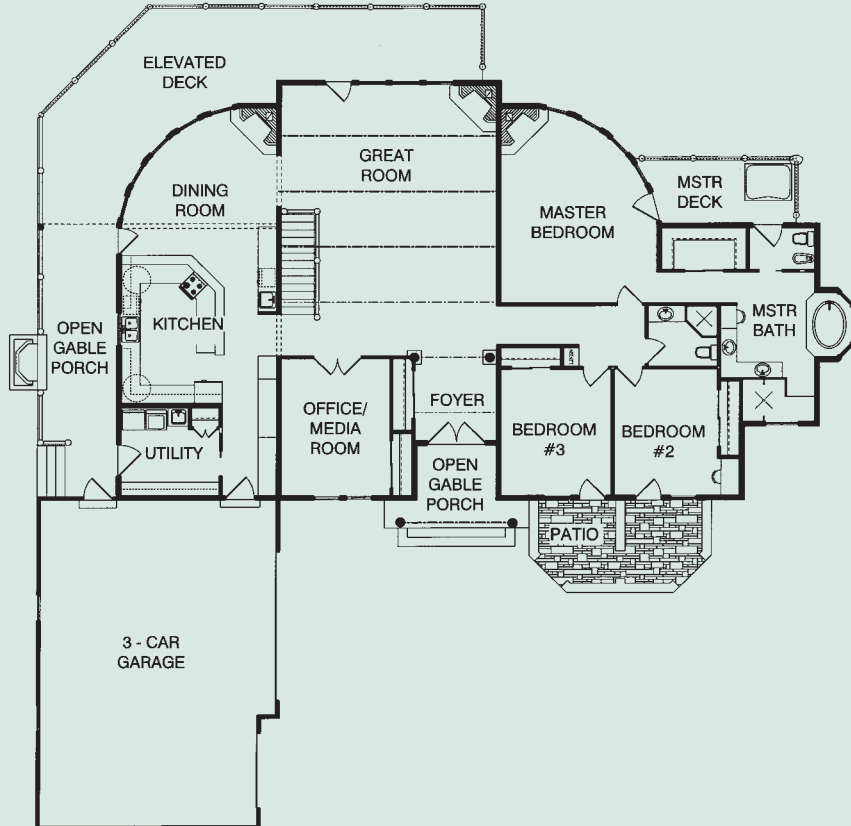
©2006 EXPEDITION LOG HOMES

## FRISCO PEAKS

**TOTAL SQ. FT.** - 2,888 sq. ft.  
**FIRST FLOOR** - 2,888 sq. ft.  
**GREAT ROOM** - 23'-0" x 24'-0"  
**KITCHEN** - 16'-8" x 16'-0"  
**DINING ROOM** - 16'-8" x 16'-0"  
**UTILITY** - 10'-6" x 9'-6"  
**FOYER** - 8'-9" x 9'-0"  
**OFFICE/MEDIA** - 11'-8" x 15'-0"  
**MASTER BEDROOM** - 16'-8" x 21'-0"  
**MASTER BATH** - 10'-1" x 16'-3"  
**W.I.C.** - 9'-2" x 4'-6"  
**BEDROOM 2** - 11'-0" x 13'-9"  
**BEDROOM 3** - 12'-0" x 13'-9"  
**BATH 2** - 7'-6" x 6'-7"  
**LOFT** - 11'-6" x 19'-6"



### FIRST FLOOR



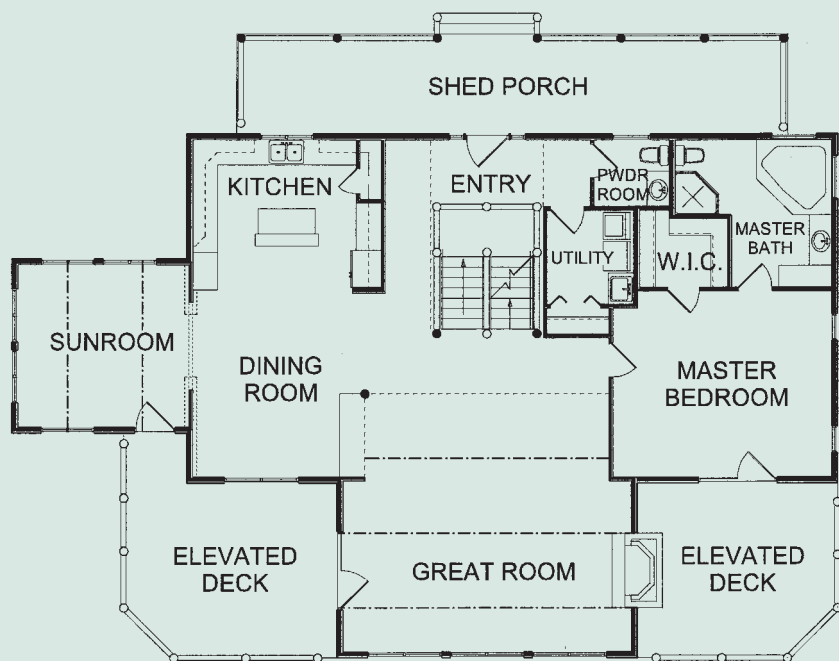
©2006 EXPEDITION LOG HOMES

## EAGLES NEST

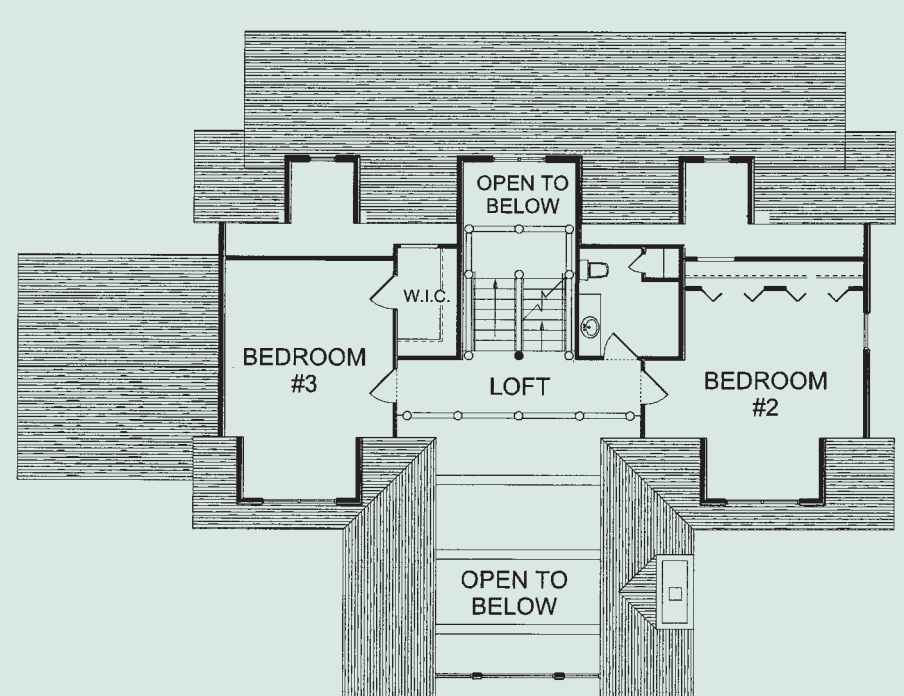
**TOTAL SQ. FT.** - 3,186 sq. ft.  
**FIRST FLOOR** - 1,988 sq. ft.  
**SECOND FLOOR** - 1,198 sq. ft.  
**GREAT ROOM** - 24'-0" x 21'-0"  
**DINING ROOM** - 14'-0" x 15'-0"  
**KITCHEN** - 16'-0" x 13'-0"  
**SUNROOM** - 14'-0" x 14'-0"  
**UTILITY** - 7'-0" x 8'-0"  
**POWDER ROOM** - 6'-0" x 6'-0"  
**MASTER BEDROOM** - 18'-0" x 15'-0"  
**MASTER BATH** - 13'-0" x 12'-0"  
**W.I.C.** - 7'-0" x 6'-0"  
**BEDROOM 2** - 18'-0" x 12'-0"  
**BEDROOM 3** - 14'-0" x 14'-0"  
**BATH** - 8'-0" x 8'-0"  
**LOFT** - 4'-5" x 20'-0"



### FIRST FLOOR



### SECOND FLOOR



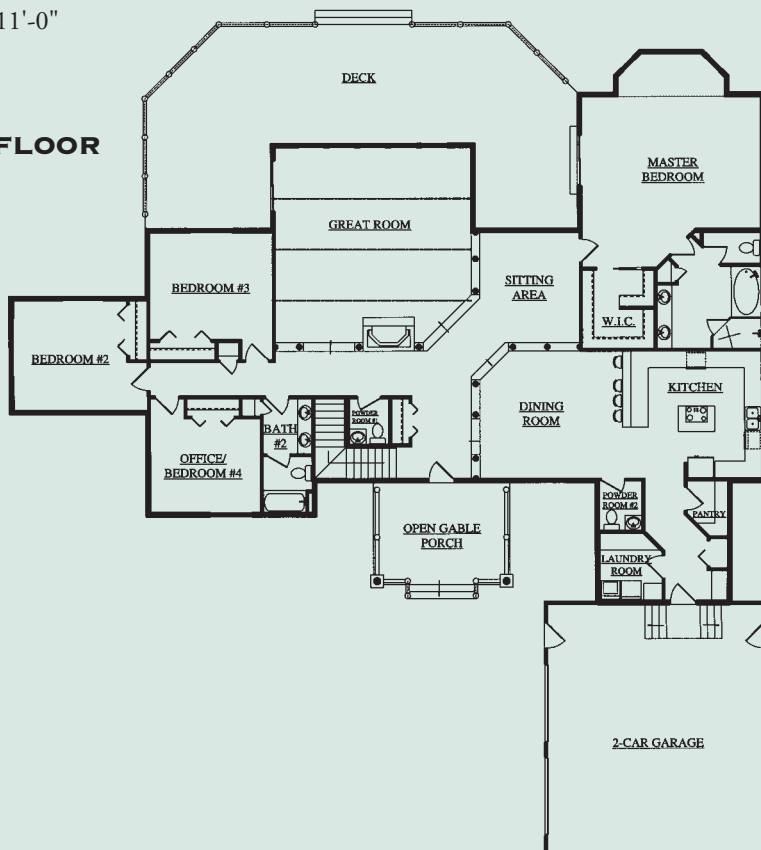
©2003 EXPEDITION LOG HOMES

## WHITETAIL COVE

**TOTAL SQ. FT.** - 3,365 sq. ft.  
**FIRST FLOOR** - 3,365 sq. ft.  
**GREAT ROOM** - 23'-0" x 23'-0"  
**KITCHEN** - 16'-3" x 15'-0"  
**DINING ROOM** - 16'-9" x 15'-0"  
**ENTRY** - 7'-0" x 9'-9"  
**LAUNDRY** - 7'-4" x 8'-0"  
**POWDER ROOM 2** - 5'-0" x 5'-10"  
**SITTING AREA** - 11'-9" x 13'-0"  
**MASTER BEDROOM** - 21'-0" x 15'-6"  
**MASTER BATH** - 12'-3" x 13'-9"  
**W.I.C.** - 8'-6" x 9'-3"  
**POWDER ROOM 1** - 4'-8" x 5'-5"  
**BATH 2** - 5'-9" x 13'-5"  
**BEDROOM 2** - 13'-6" x 13'-0"  
**BEDROOM 3** - 14'-6" x 12'-6"  
**OFFICE/BEDROOM 4** - 13'-0" x 11'-0"



**FIRST FLOOR**



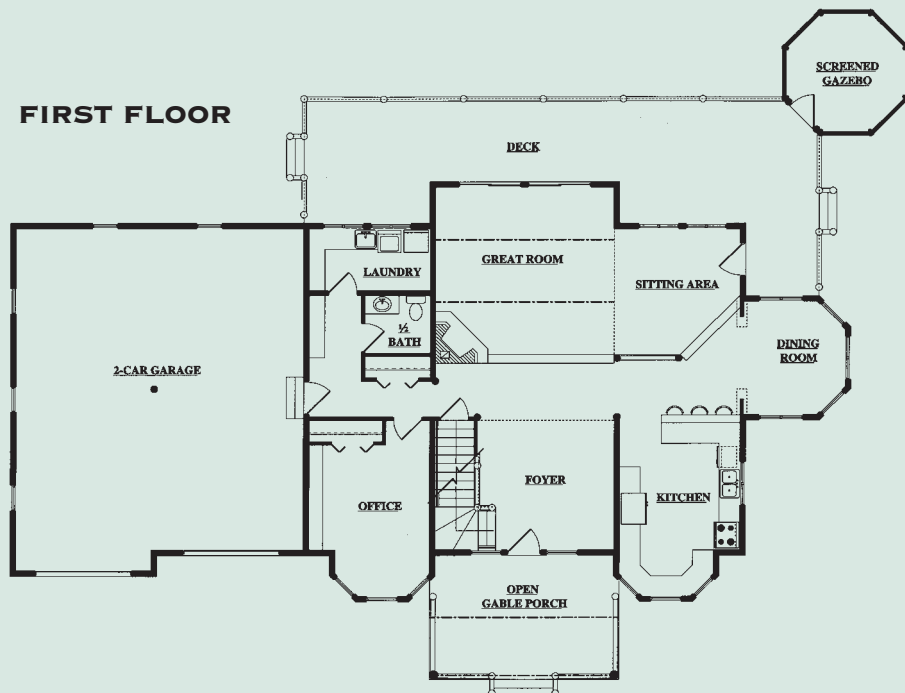
©2006 EXPEDITION LOG HOMES

## MOOSE RIVER

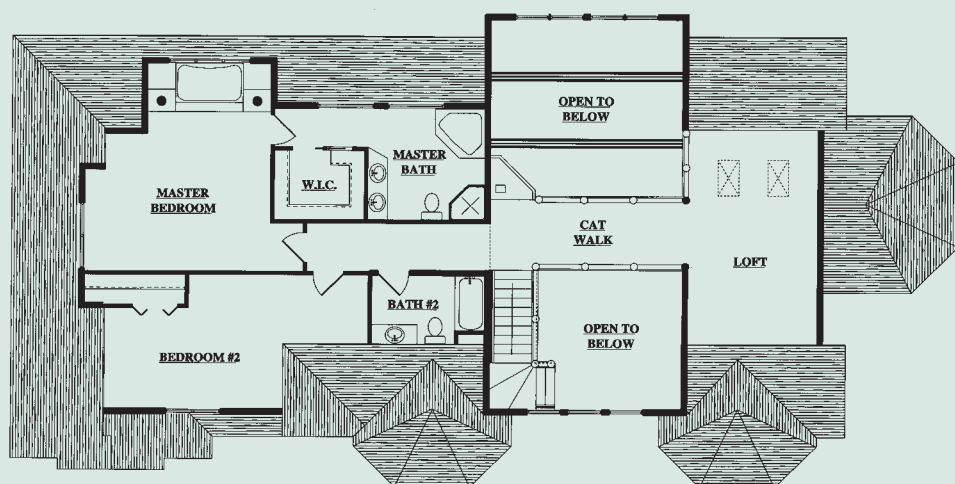
**TOTAL SQ. FT.** - 3,371 sq. ft.  
**FIRST FLOOR** - 1,593 sq. ft.  
**SECOND FLOOR** - 1,778 sq. ft.  
**GREAT ROOM** - 17'-0" x 16'-0"  
**KITCHEN** - 11'-6" x 16'-9"  
**DINING ROOM** - 9'-9" x 11'-0"  
**SITTING AREA** - 12'-0" x 12'-0"  
**LAUNDRY** - 11'-6" x 6'-0"  
**FOYER** - 13'-0" x 12'-6"  
**1/2 BATH** - 6'-3" x 5'-7"  
**OFFICE** - 11'-6" x 14'-9"  
**MASTER BEDROOM** - 16'-6" x 18'-9"  
**MASTER BATH** - 10'-5" x 10'-0"  
**W.I.C.** - 8'-0" x 6'-3"  
**BEDROOM 2** - 16'-0" x 12'-0"  
**BATH 2** - 10'-0" x 6'-3"  
**LOFT** - 11'-6" x 19'-6"



**FIRST FLOOR**



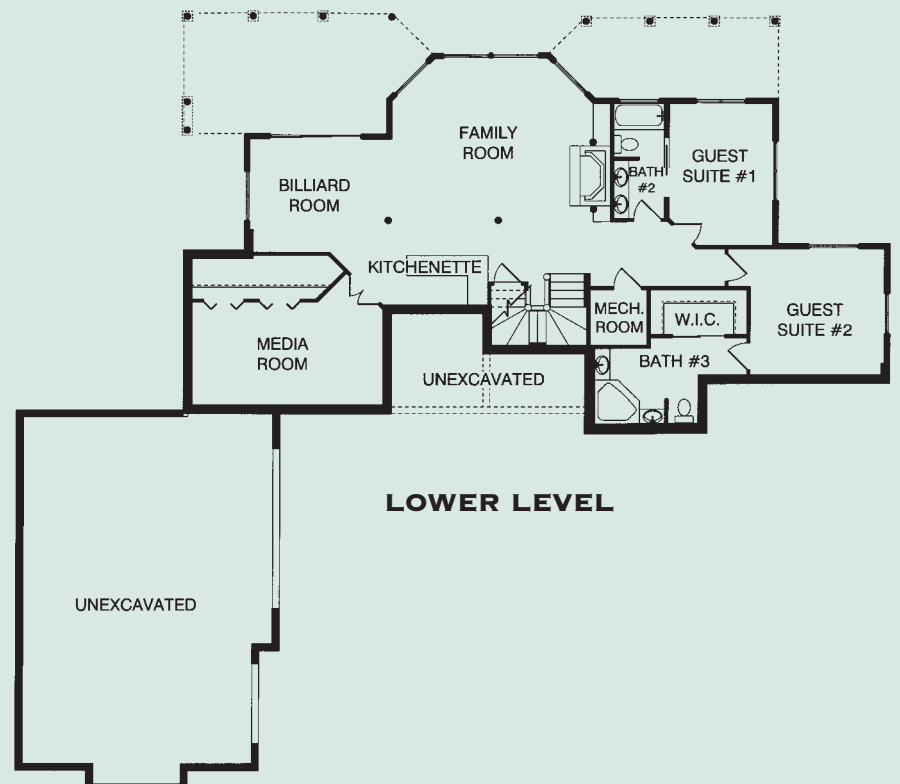
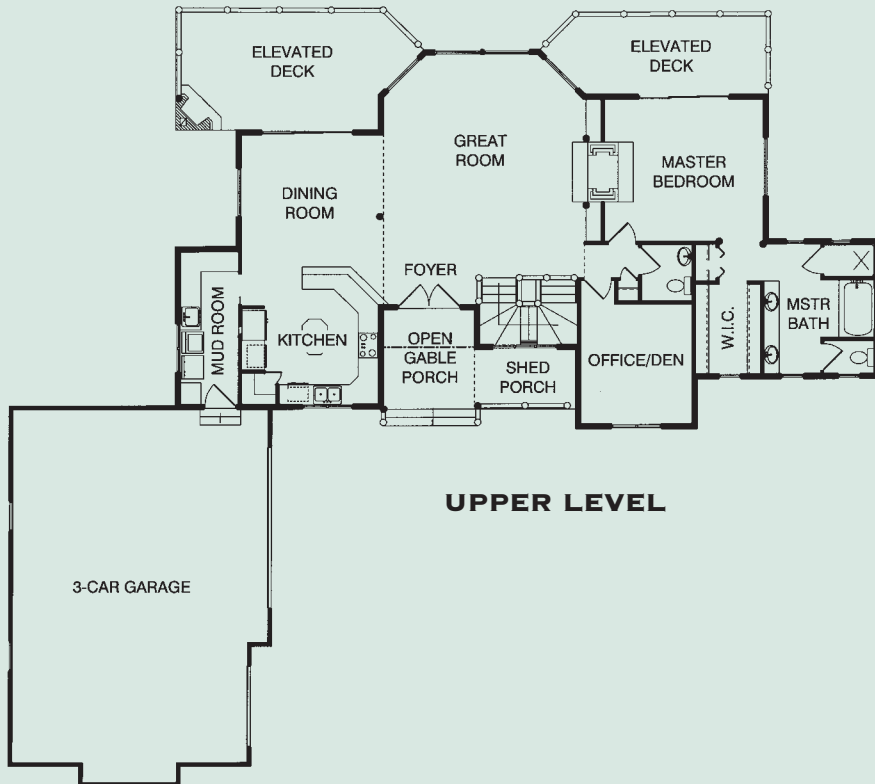
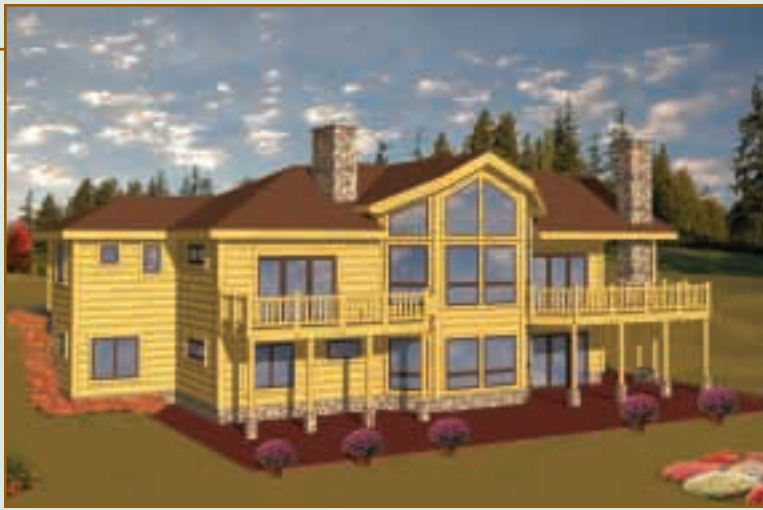
**SECOND FLOOR**



©2006 EXPEDITION LOG HOMES

## NORDIC LODGE

**TOTAL SQ. FT.** - 3,384 sq. ft.  
**UPPER LEVEL** - 1,692 sq. ft.  
**LOWER LEVEL** - 1,692 sq. ft.  
**GREAT ROOM** - 20'-0" x 19'-0"  
**DINING ROOM** - 14'-0" x 13'-6"  
**KITCHEN** - 14'-0" x 13'-9"  
**MUD ROOM** - 5'-9" x 15'-6"  
**MASTER BEDROOM** - 15'-9" x 14'-3"  
**MASTER BATH** - 11'-0" x 13'-0"  
**OFFICE/DEN** - 11'-0" x 12'-0"  
**FAMILY ROOM** - 20'-0" x 20'-0"  
**BILLIARD ROOM** - 11'-6" x 14'-0"  
**MEDIA ROOM** - 11'-0" x 20'-0"  
**GUEST SUITE 1** - 10'-3" x 14'-3"  
**GUEST SUITE 2** - 13'-3" x 13'-6"  
**BATH 2** - 5'-0" x 11'-6"  
**BATH 3** - 10'-3" x 7'-6"



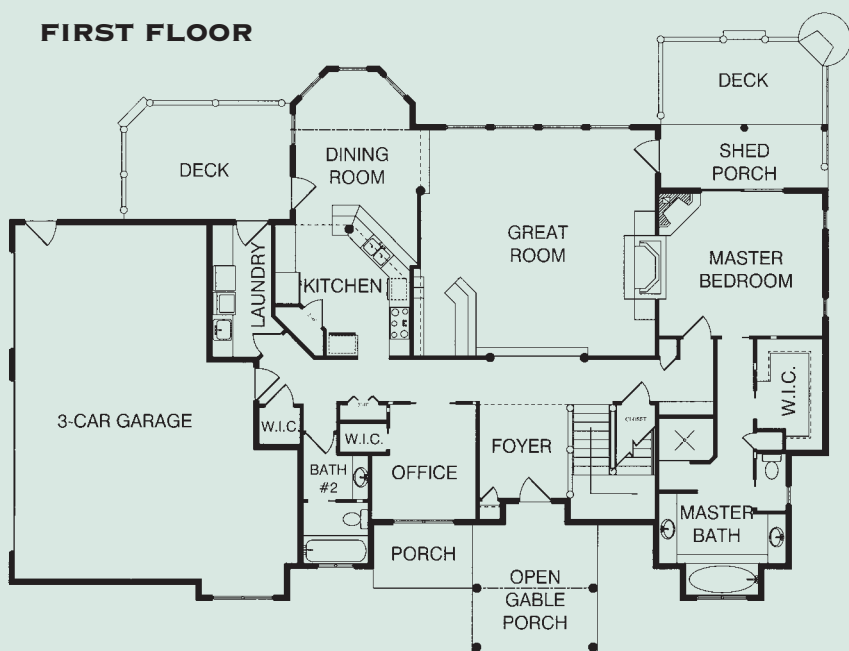
©2006 EXPEDITION LOG HOMES

## SUNSET PEAK

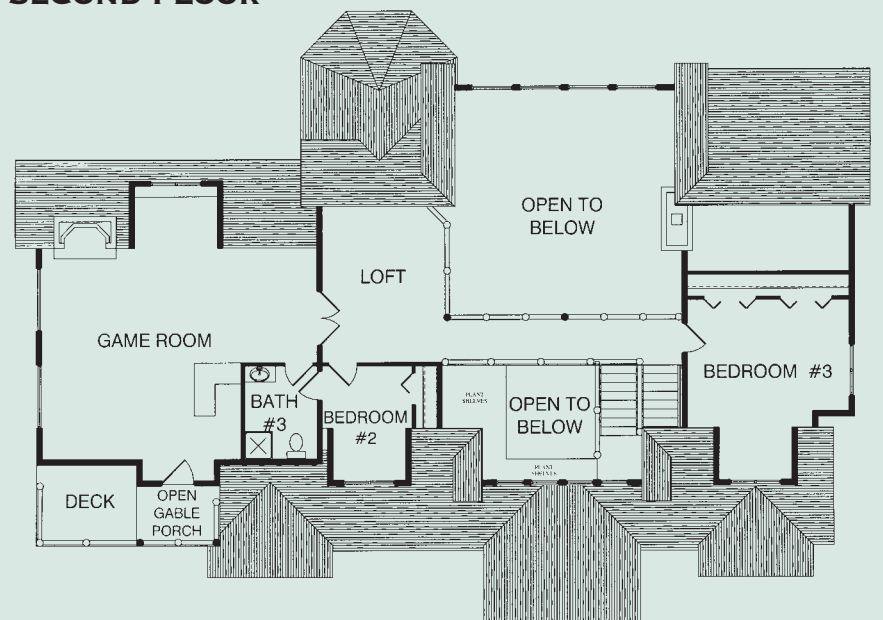
**TOTAL SQ. FT.** - 3,650 sq. ft.  
**FIRST FLOOR** - 2,202 sq. ft.  
**SECOND FLOOR** - 1,448 sq. ft.  
**GREAT ROOM** - 22'-6" x 21'-6"  
**DINING ROOM** - 11'-0" x 12'-6"  
**KITCHEN** - 13'-0" x 14'-3"  
**OFFICE** - 10'-0" x 11'-0"  
**FOYER** - 9'-0" x 9'-0"  
**MASTER BEDROOM** - 15'-9" x 13'-6"  
**MASTER BATH** - 12'-3" x 13'-3"  
**GAME ROOM** - 26'-6" x 28'-0"  
**LOFT** - 12'-0" x 12'-9"  
**BEDROOM 2** - 8'-6" x 11'-0"  
**BEDROOM 3** - 15'-6" x 17'-0"  
**BATHROOM 2** - 6'-3" x 10'-3"  
**LAUNDRY** - 5'-9" x 12'-6"  
**BATHROOM 3** - 7'-0" x 8'-9"



### FIRST FLOOR



### SECOND FLOOR



©2003 EXPEDITION LOG HOMES